

**Municipal bonds may unite or divide**  
— see Bifani on Belleville, pg. 5

**Columbus parade salutes proud Italian heritage**  
— see pg. 18 - 19

**BHS Football Bucs taste first victory**  
— see Sports, pg. 13

# Belleville Times

77 Year No. 45 An Orechio Publication

Serving Belleville Since 1909

Thursday, October 16, 1986 35¢

## Armed robberies strike town markets

By Christopher Bifani

Belleville was the scene of two more armed robberies earlier this week, with incidents reported at each of the townships two Pathmark supermarkets.

### Newsmakers



Rev. Msgr. Louis Fimiani

## Holy Family welcomes new Monsignor

By Pat de la Parra

Rev. Msgr. Louis Fimiani has been assigned as the new Pastor of Holy Family Church in Newark. Father Fimiani replaces Rev. Msgr. Francis J. Blake, who died July 4 after suffering a heart attack in May.

Father Fimiani was born in Newark and moved to Bloomfield shortly afterwards where he attended Bloomfield public schools. He attended Immaculate Conception High School in Montclair for three years and graduated from Seton Hall Prep in 1952. He graduated from Seton Hall University in 1956 and Immaculate

(continued on page 9)



Bellevillite John Sena

## Senior starts charity fund

By Phil White

John Sena, born 72 years ago in Belleville, isn't rich—but he wants to give away his money to deserving senior citizens who live in the town he loves the most.

Accordingly, Sena is contributing to fund a foundation which is being created in his name. "I want to help senior citizens especially," Sena told Belleville Times publisher Frank Orechio who is assisting the retired boiler-room worker with his unusual philanthropic effort.

"I've been helping people all my life whenever I can," Sena says. "When I was in the oil business, there were many times when I knew people couldn't pay and so I eventually forgot about the bill."

Sena got the idea to establish some kind of fund to assist Belleville seniors in need while he was

(continued on page 3)

Belleville Police Captain Michael Petrillo told the Times that the first incident, which occurred Sunday, October 12 at 9 p.m. outside of the Washington Avenue Pathmark involved an alleged kidnapping at gunpoint with robbery of \$300 resulting, but no injuries.

The second incident, Petrillo said, occurred Tuesday, October 14 at about 11 a.m. at the Belmont Avenue Pathmark when a cashier was handed a note demanding money, threatening a concealed gun, and claiming a partner had a bomb in the building.

At present the incidents appear to be unrelated.

### Get in the car

Elaborating on the October 12 incident, Petrillo said that Raymond Oyola, 22 of neighboring Harrison stated he was at the bus stop across the street from the Washington Avenue Pathmark upon finishing his day's work at the photo shop within the supermarket mall.

At about 9 p.m. a car which Oyola described as mustard-colored pulled up in front of the bus stop containing three white males.

Oyola said one of the men said something to him which he could not decipher. Assuming the men were asking him for directions, he approached the car at which point the driver pulled out a gun and ordered Oyola to get in the car.

The alleged victim further stated that the driver opened the door of the car—a two-door hatchback model—and the man in the back seat subsequently grabbed Oyola by the coat, pulling him into the vehicle.

Oyola told police that the gun, a black revolver type, was held up against his throat and he was ordered to place his head between his knees.

"At this point, the man in the back seat allegedly took Oyola's wallet," Petrillo said, "which contained—are you ready for this—\$2."

After this, the back seat suspect then checked the victim's coat, finding an envelope containing \$300, the day's receipts from the photo shop.

### Dropped off on highway

What followed was a three-hour drive through New Jersey, with Oyola ultimately being dropped off on a dark stretch of highway around midnight. Oyola did not know what highway he was dropped off at, nor did he provide police with any license plate description.

Oyola walked for three hours, he told police, before finally being picked up by a truck driver who saw him hitchhiking. He said he passed a sign which indicated a nearby Turnpike entrance and he believes he may have been in the Morristown area.

While in the truck Oyola said he fell asleep. He reported that he was awakened by the truck driver in neighboring Newark, near the Clay Street bridge leading into Harrison. He said he crossed the bridge, walked to Harrison Police headquarters and reported his ordeal. Harrison then referred the case to Belleville.

The suspects are described as follows:

The driver is a white male, in his twenties, with medium length dark hair, and clean shaven.

The front seat passenger is also described as being white and in his twenties, with light brown or dirty blond medium-length hair, and with a thin mustache.

(continued on page 7)



Commissioner of Health and Welfare Michael Piro, Grand Marshal James Piro, and Commissioner of Public Safety Ralph DiRuggiero.

## Love a parade...



Nutmeg Parade Chairman Joe Romagnoli and Belleville Parade Chairman Joe Dasaro



Bella Signorina Christina Albanese and Grand Marshal James Piro



Belleville Parade Chairman Joe Dasaro and General Chairman Joan Carletta

**Parade dignitaries**—Belleville and East Essex community leaders turned out en masse for a stirring Belleville-Nutmeg Columbus Day Parade October 12. After the gala affair, many stopped for the Times paparazzi, including commissioners, state legislators, chairmen, the Grand Marshal and, of course, the Bella Signorina. (Photos by Jaye Tarantino)

## Belleville begins recycling papers

Essex County Executive Peter Shapiro and Belleville Mayor Michael V. Marotti have announced the scheduled beginning of a curbside collection program for newspapers, magazines, and telephone books starting Wednesday, October 22, 1986.

Collections will be made by the Occupational Center of Essex County twice a month for one, two, three and four family residences. The Township has been divided into six (6) zones with collections Monday through Saturday in a different zone.

Flyers have been sent to each Residential Postal Patron with a

map and complete details of the program. Extra flyers are available at Town Hall.

Items collected can be newspapers, magazines and telephone books. Bundles must not exceed 13 inches in height and 30 pounds in weight. It is requested that bundles be tied with twine. However, newspapers may be placed in paper bags; plastic bags filled with newspapers cannot be accepted.

Collections will be made between 8 a.m. and 5 p.m. Special numbers for missed collections

(continued on page 9)

### Local realtor hits paydirt

## 'Condo Town' gold rush attracting investment

Govel Realtors is bullish on 'Condo Town.'

The Belleville-based real estate firm has long been involved in the township's condominium craze, and now that the craze is moving into the mania stage, the firm appears to be profiting handsomely.

Currently, Govel is involved in at least three new condominium projects, according to the LePorte firm of West Caldwell, which handles their public relations. This is in addition to several township condominium projects the firm is already involved in.

The smallest project, Twin View, contains four townhomes, three of which have already been sold. Nicolas Gisondi, Govel's director of marketing, credited "spaceousness, competitive pricing, and appointments" as three factors leading to sales. Belleville's convenient location, proximity to major highways, mass transit access, and plentiful parking and shopping are other features the firm credits with increasing company condo sales.

Not surprisingly, these are some of the main reasons condominium developers from throughout the area have become keenly interested in turning Belleville into 'Condo Town.'

Twin View is located on Janerone Street, just off Passaic Avenue. Developed by the

Chanree Construction firm, it is scheduled for occupancy soon.

The four Twin View townhomes were initially priced in the moderate \$170,000 price range.

A much larger new condominium project, now completing the final stages of construction, will place 30 luxury housing units squarely in the middle of Belleville's border zone with Newark.

This area, once feared to be susceptible to encroaching Newark blight, has apparently cast off any declining stigma it may have once had, if the Govel's sales reports are any indication.

Convent Court, located at 2 Honiss St., Belleville/Newark line, attracted "hundreds of prospective purchasers, whom Govel Realtors narrowed down to 30 buyers on a first-come, first-served basis," LePorte said.

The publicist added that "within seven days of launching the sales and marketing program for Convent Court, all condominium units were under contract to qualified buyers."

On the Newark side of the Belleville/Newark line, blight has apparently been checked by a renewed white collar interest in the stately homes of the city's Forest Hills section. The Belleville

(continued on page 3)

## Orechio bill would provide special crimefighter plates

A Bill to provide special license plates for members of local crime watch programs was released without objection Oct. 6 by the Senate Committee on Law, Public Safety and Defense.

S.2550, sponsored by Sen. Carmen A. Orechio (D-Essex), now awaits action before the Senate.

"This measure would provide a recognizable symbol for those who participate in these worthwhile programs," said Orechio.

In addition, the special license plates would inform those who see

them that these drivers are available to help out when there is a need.

Drivers would have to be listed with local police departments as active members of neighborhood watch or other local crime prevention programs to qualify for the special plates, he said. The insignia for crime-watch programs, an eye would be placed on the license plates to those who qualify.

"We should provide the recognition to help safeguard those around them," Orechio said.

## Contents...

Belleville briefly.....	2
Editorial.....	4-5
Bookmarks.....	6
Crimebreaker!.....	7
Events in the area.....	10
Social news.....	11
Sports.....	13-16
Obituaries.....	17
Religious viewpoints.....	17
Classified.....	20-23

# BELLEVILLE briefly...

## Three Belleville students score high in national test

Belleville High School has been notified by National Merit Scholarship Corporation of Evanston, Illinois, that Joseph Fernicola, Chris Goldrick, and Aytone Schaefer have been designated Commended Students in the 1987 National Merit Scholarship Program and will receive Letters of Commendation in recognition of outstanding academic promise. The principal, Joseph Ciccone, announced this month that on the basis of performance on the qualifying test for the 32nd annual Merit Program these seniors placed in the top 5 percent of more than one million participants.

An officer of NMSC, which conducts the program, stated, "The very high test performance of the young men and women who are honored as Commended Students in the Merit Program is indicative of exceptional scholastic ability. We hope that NMSC's recognition of these high school students will increase their motivation to make the best use of their talents and to develop the skills that will be needed by the future leaders of our nation. Being named a Commended Student in this keen competition is a credit to these young citizens as well as to their schools, which play a key role in their development."

## Communications skills class helps students

Passing the High School Proficiency Test (HSPT) is one of the state mandated prerequisites for graduating from high school. This test is administered in 9th grade. However, teaching the required skills begins in kindergarten.

Belleville students who do not have the necessary level of skills required to pass the HSPT by 8th grade are enrolled in a new course, HSPT Communication Skills. This class meets for 40 minutes each day throughout the year to

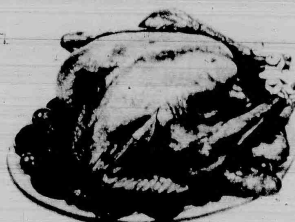
prepare the students to pass the Reading and Writing section of the HSPT.

The classes are small in size and carefully monitored for progress in skill development. A variety of materials and techniques are used in presenting the skills to the students. Throughout the year homework will be assigned to practice and reinforce the skills taught.

The course is taught by two teachers. Yanny Valenzuela spent last year at School 7 teaching 3rd grade and English as a second language (ESL) in the kindergarten level. Her 12 years of teaching experience include teaching in West Milford, as well as Belleville. She is a graduate of

William Paterson College where she received her certification in Elementary Education and as a Teacher of Reading. My May 1987 she will have completed her Master's program in Reading at William Paterson College which will certify her as a Reading Specialist.

Heather Schlosser is a graduate of Hofstra University with a Bachelor of Science in Education. Her Master's in Reading was also attained at Hofstra University. In addition to being a Reading Specialist, she is certified as a teacher of Reading K-12 and Elementary K-5. She has been teaching for 6 years. Last year she was employed by Perth Amboy where she taught Reading and Math.



## Turkey Shoot

Mayor Michael V. Marotti announced this week that the 20th annual Recreation Department Turkey Shoot will be held on Sunday, November 2nd at the Pistol Range on Joralemon Street and Hoover Avenue. Belleville's pilgrims are invited to gather at the range beginning at 10:30 a.m. and the shoot will go until 3:30 p.m. Men, women and children over 12 years of age accompanied by an adult are invited.

"The winning is largely a matter of chance with each participant purchasing a random target for \$1. Out of eight shooters, one is declared a winner based on the highest score. The winner of each flight will receive a certificate for a turkey worth \$8. Guns and ammunition will be furnished.

Random targets are used so that everyone has an equal chance to win.

The rain date for this special event will be Sunday, November 9.

## Kiwanis salute newspapers

The Kiwanis Club of Belleville observed National Newspaper Week, October 5-11, at its meeting on Thursday, October 9th, according to club president Michael Megaro.

Kiwanis is the oldest participating organization in the National Newspaper Week observance. The theme of this year's observance is "A Free Press Serves A Free People."

"Kiwanis clubs throughout the United States and Canada are taking this opportunity to salute

newspapers and the vital community role they play," says Megaro. "Kiwanis clubs are committed to building better communities."

Newspapers are also community builders as well as important guardians of our freedom of expression. By publicizing our fund raising and service projects, newspapers also contribute much to the success of Kiwanis and other community service groups. We're happy to have this opportunity to thank and salute the men and women of the press," Megaro said.

## Potholes, potholes...

It was more than 20 years ago that they came to the 100 block of Malone Avenue and laid a sewer pipe under the center of the street.

Robert Robson of 111 Malone Ave. arrived shortly after, and recalls being told by the neighbors that the torn up and repatched section of roadway would soon be replaced.

This had to be more than 20 years ago, because last week Robson made the last payment on his mortgage, looked outside, and saw the same patched but not repaved strip in front of his house.

Robson, a leather finisher by trade, has to pull his car out of the driveway and cross what seems to be a cratered surface of the moon. One set of springs and several

shock absorbers later, he is still crossing that broken up section of roadway.

His neighbors are in the same predicament, and they have registered a protest with the Board of Commissioners — who say they are getting around it.

A repaving program is underway, and some of the first sections to be restored to health are near the firehouses.

There are no firehouses on the 100 block of Malone Avenue, just some steaming homes.

"Every spring, they come take a look at the potholes, patch them, and are gone until next year," Robson said. "Maybe this time they'll come and stay a while."

## Troise Insurance Agency

proudly supports the upcoming

10K Scholarship Run

sponsored by the Belleville Chamber of Commerce

Sunday, Oct. 26th, 10 A.M.

172 Washington Ave.

759-4100

## Briefly deadline

The deadline for Belleville Brief is releases is the Monday before each Thursday issue.

To make sure your releases reach the newspaper in time, mail by the preceding Friday to: The Belleville Times, "Belleville Briefly," P.O. Box 56, Belleville, N.J. 07009.

1885

1986

101 Years of Uninterrupted Dividends

# YOUR FIRST FINANCIAL CENTER

## FOR LOW-RATE MORTGAGES

No Balloon Payments — No prepayment penalty — Fixed Rate — No Charges

## FOR HOME EQUITY LOANS

Up to \$100,000! No Points! No Fees! No Red Tape!

## FOR LOWER-RATE NEW CAR LOANS

And you don't need an account with us to qualify.

## FOR IRAS, CDs, MONEY MKT. ACCOUNTS!

## FOR INTEREST-BEARING CHECKING ACCOUNTS!

Plus High-Rate Savings Plans, Money Management  
And Other Financial Services!

Delivering VALUE to YOU — Our FIRST Imperative!

# FIRST DeWITT SAVINGS

AND LOAN ASSOCIATION

BELLEVILLE • BLOOMFIELD • CEDAR GROVE • HOPATCONG

WEST CALDWELL • BRICKTOWN • PARSIPPANY



TELEPHONE

751-2800

ALL OFFICES



## Jewish veterans celebrating 50th

North Essex Post 146, Jewish War Veterans of U.S.A. is celebrating its 50th anniversary at the Paramount Hotel in Parkville, New York, October 22 to 26.

The Post was formed in 1936 with charter members from Belleville, Nutley, Bloomfield and other north Essex communities. The first commander was Dr. Benjamin Jacobson of Belleville.

Dr. Jacobson, who during World War II was awarded the Silver Star for Gallantry in action, and who also received a Special Citation from General Pershing was recommended for the Distinguished Service Cross and was awarded the "Croix de Guerre" for treatment of wounded under fire by General Petain of France.

At present, the post has four surviving WWI veterans, the oldest being Emanuel Zwiering of Bloomfield at 99 years of age.

The post is a member of the Bloomfield Joint Memorial Committee and participates in the Memorial Day activities, Veterans Day functions and other veteran and civic celebrations. Monthly visits to the East Orange Veterans Hospital to entertain the patients is one of many post activities.

As with many veterans groups, the post is always seeking new members. They say, "We know the eligibles are out there."

If you need any information or help with a service related problem, call Oscar Nathans, Post Adjutant at 746-4817 or Post Commander Morton Eisenberg at 239-3128.

## DON'T JUDGE A BOOK BY ITS' COLOR ....

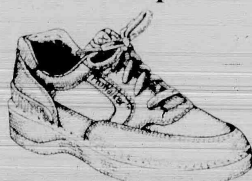
Gold-Blue-Red-Purple-Nice Colors. They make nice jackets too. Just drive into any Hamburger Stand and see. But when you need to talk Real Estate, don't look for colors, look for competence.

## REILLY REALTORS

759-1682

Now Interviewing For Career Positions

Rockport Walk Week '86  
Nobody supports  
fitness walking  
like Rockport.



Biomechanically engineered for fitness walking, ProWalkers® have Rockport's innovative Walk Support System™. So you can walk in maximum comfort and get the ultimate in shock absorption, stability and support.

Come in and try on a pair of Rockport ProWalkers. And see how easy it is to fitness walk when you've got some support!

Take the Rockport® Fitness Walking Test, free! Visit our store during Walk Week and pick up your own Rockport Fitness Walking Test — free. It's an easy way to check your fitness level and learn how to improve it.



Rockport

Plaza Bootery



Free  
Parking

483 Franklin Ave.

Nutley, N.J. 667-8964



Shoe Repairing  
Date On  
Premises

© 1986 The Rockport Company

**STREET MACHINE**

Time 11 AM  
to 12 PM  
October  
11, 18, 25  
and November 1

**3 HOURS  
OF BOWLING FUN  
FOR KIDS 6 TO 12  
JUST \$3.75!**

**WIN A MURRAY 2-SPEED  
STREET MACHINE  
KENNER SUPER POWERS  
ACTION TOYS AND MORE!**



**Olympic Bowl  
Brunswick**  
679 Washington Ave.  
Belleville, N.J. 07109  
751-2111





New VP, John R. Bruno (left), chairman of the board of Pragma Bio-Tech, Inc., welcomes Dr. William C. Waggoner, president of Clinical Evaluations Inc., to the staff of Pragma as vice president. Clinical Evaluations was recently acquired by Pragma.

## Pragma buys Clinical

John R. Bruno, chairman of the board of Pragma Bio-Tech, Inc., of Bloomfield, said the board recently voted to acquire another Bloomfield company, Clinical Evaluations, Inc.

Bruno is grants officer for the township of Belleville and the Belleville Board of Education.

Clinical Evaluations is an independent medical contract research firm specializing in over-the-counter drug and cosmetic testing. Dr. William C. Waggoner, president of Clinical Evaluations, will

become a vice president of Pragma Bio-Tech. He will report to Bruno.

Waggoner brings more than 23 years' experience in product research. The transaction will give Pragma Bio-Tech "a comprehensive spectrum of experience and abilities" encompassing all medical research phases of health care and beauty and products," Bruno said.

Clinical Evaluations also offers a "sound background" in regulatory affairs to assist clientele in preparation of clinical reports for governmental acceptance, he said.

## Man starts foundation

Continued from page 1D

In the process of selling his home, I paid \$22,000 for my house when I moved in 22 years ago. Now I've sold my home for \$42,000 and now at the age of 72, I really don't need all that money. I want to help others."

The basic concept of the John Sena Foundation is to have written requests for money, generally small sums, addressed to the foundation in care of the Belleville Times.

A yet-to-be appointed board of governors will review the requests along with Sena and make the award.

Requests will also be published by the Belleville Times in an edited form to describe the actual persons involved. Sena's comments and assessments will also be announced in the same column relating to the foundation which will appear in the Belleville Times.

"I want the people to write to the Belleville Times and state their needs and why they think they themselves, or others they know, may be deserving," Sena said.

"Of course, there will be some kind of a limit," but I'm turning over a \$10,000 check to the foundation to get things started," he said.

**M & K CAB**  
35 Franklin Ave. Nutley

**\$2.50 Local Rate**  
Flat Rates Out Of Town

**CALL 661-4000**  
Open 7 Days  
Prompt & Courteous Service

## Realtor is bullish on 'Condo Town'

(Continued from page 1)

Branch Brook Park, too, may be a contributing factor to the area's new found upscale desirability.

Says Govel President William Govel: "The fact that we experienced a complete sell-out before construction is even completed is an indication of the strength of the residential market in general, and the growing vitality of the Newark/Belleville area in particular."

Govel said the area's close proximity to PATH and city subway trains also contributed to the market's new-found attractiveness.

Govel Realtors is also actively involved in the condo conversion of existing apartment buildings. Franklin View Apartments, located at 725 Joralemon Street in Belleville, were originally offered to existing tenants for purchase.

and 25 percent purchased their rented homes days after the units were offered at "special insider prices," according to LePore.

Meanwhile, outside investors have also been buying a piece of Belleville via the Franklin View condo offering. Of the 30 units sold, purchased by tenants, only 3 are meant to be sold. The firm estimates that 7 were picked up by families, planning to move in, while 10 have already been sold to investors. Franklin View has 30 units in all.

Other recent conversions of apartments to condos handled by the Govel firm include the 250 Bridgebrook Apartments, located at 725 Joralemon Street in Belleville.

Although the Bridgebrook conversion caused much controversy at special rent leveling board

meetings earlier in the year, the Govel firm has labeled the switch a "successful undertaking."

While Govel Realtors basks in the success of its condominium enterprises in Belleville, long-time residents of the township are becoming increasingly concerned about the rapid influx of units.

Recently, a letter to the Belleville Times editor focused on neighborhood concern over a zoning board approved ten unit condominium project going up in the Nutley end of Belleville.

Marie Mauriello of Emmet Street contends that the area is zoned only for eight units, not 10, and that the "3 story building could block sun."

Similar neighborhood concerns have been voiced about other township condominium developments. Between one and two dozen developments have been built, converted, or are in the works. This figure represents more than 600 units of condominium housing in Belleville, and many more are in the works.

# HAPPY BIRTHDAY

# D

I love you!

## OVERWEIGHT?

**Lolly and Toni of Lean Line**  
Invite You to a  
**FREE AND OPEN MEETING!**

**Monday, October 27 at 7:00 PM**  
VEW Hall, Post 493, 271 Washington Avenue, Nutley



Lolly Wurtzel



Toni Marotta

Come hear Lolly and Toni, the most dynamic, humorous speakers in the weight reduction field. Lolly who has lost 76 pounds, and Toni who has lost 46 pounds, have been professionally affiliated in weight reduction for 20 years. Registration will follow this free meeting. Let Lolly and Toni help you discover how to lose weight and keep it off!

**LeanLine® Weight Loss Program**  
"One time for a lifetime."

151 New World Way, South Plainfield, New Jersey 07080

## 1/2 Off Registration

BRING THIS AD TO ANY LEAN LINE CLASS AND SAVE \$0.00  
Pay only \$5.00 when registering or re-registering and \$0.00 weekly thereafter.  
NJ 1-800-624-3108 or 201-757-7877 • NY PA 1-800-528-5885

<p><b>NUTLEY</b> VEW Hall, Post 493 271 Washington Ave. Mon. 7:15 PM, Tues. 8:15 AM</p>	<p><b>BLOOMFIELD</b> White Eagle Manor 41 Broughton Avenue Wednesdays 7:15 PM</p>	<p><b>CLIFTON</b> Howard Johnson's Route 3 West Tuesdays 7:15 PM</p>
---	---	--

## GEM

Carpets, Inc.

237 Centric Street  
Nutley, N.J. 661-0156

For the special customer who appreciates the finest in...

- CARPET
- LINOLEUM
- SOLID VINYL TILE
- HARDWOOD FLOOR
- CERAMIC TILE
- WALLCOVERING
- WINDOW TREATMENTS

Mon. 9:30 AM - 6:00 PM  
Tues. 9:30 AM - 6:00 PM  
Wed. 9:30 AM - 6:00 PM  
Thurs. 9:30 AM - 6:00 PM  
Fri. 9:30 AM - 6:00 PM  
Sat. 9:30 AM - 5:00 PM  
Sun. 10:00 AM - 5:00 PM

WE'RE FIGHTING FOR YOUR LIFE

American Heart Association

## Come see Ronald McDonald Live and in person!

It's free! And it's going to be more fun than a barrel of hamburgers. Games. Magic tricks. Songs. Even special prizes. And be sure to bring your camera, too, so you can take pictures of Ronald and the kids. Don't miss it! It's McDonald's fun for the whole family.

**Grand Re-Opening Celebration**  
McDonald's of Belleville



## Hey, Mom! Be sure to cut out this OFFICIAL RONALD McDONALD SHOW REMINDER.



On Sunday, October 19, at McDonald's, Washington Ave., Belleville bring the kids to see the all new Ronald McDonald Show. The show starts at 2 and lasts 'til 4 p.m.

**IT'S A GOOD TIME FOR THE GREAT TASTE.**



© 1984 McDonald's Corporation

## NOW OPEN In NUTLEY

**Residential — Commercial**

**Apartment Rentals**  
No Cost To Landlords

**Free Market Analysis**

Know what your home is worth in today's market

Take advantage of Century 21 national relocation system



**Award Agency**  
152 Franklin Ave., Nutley  
661-3808









## Letters to the Editor

*Waste not, want not...*

Belleville will begin the recycling of newspapers on October 22, 1986. This will be the start of a program which will

we feel that with everyone's participation, we will make this important program a big success.

PG. 4

Light  
Printing

## Jackie Rega, where are you?

The continued controversy over the construction of a \$10 million planned new town hall, now reduced to a \$5 million police headquarters edifice rages on, goaded principally by the leaders of the Concerned Citizens of Belleville, Inc. and its members galvanized into action by menacing local tax increases.

Comprehensive press coverage replete with detailed description of the acrimony, invective and concerned resentment displayed by an aroused taxpayers group vividly depicts the growing militant schism between members of this group angered by what they contend is the persistent insensitivity of the township officials and the local governing body which contends its judgment decisions were and are both legal and within the best interests of the community.



fully understand  
is of a working  
would resent be  
the throes of  
rental increases  
a period of a  
and therefore  
aid of any kind  
for financial  
opportunity to  
be intelligent, in  
in speakers who  
and mesmerize  
cohort men  
the defeat of  
elect town elec  
at a gathering  
another town  
was announced  
run for commu  
nizing municipa

is well within  
priety and may  
er capacity for  
the "rhubarb,"  
questioned cor  
f the proposed  
program may  
eir opportunity  
able candidates  
bove, to borrow  
el's phrase, the  
st question is  
ic Rega played  
air if any. He  
Nazzolina in  
e local school  
lways garrulous  
his taciturn as  
ly? Are you be-  
icked? Are you  
ruse of threats?  
mon Ice King"  
hort on discus-  
any Belleville

teristic of this  
cumspect... his  
art had become  
ill to gather to  
nd observations  
scuttlebutt of

zeitgeist of the Rega's political has been shat which in com- tent evaluations I events is truly o many wonder- sential that a tizenry be en- ur the ramifications developments in the seems it would be Rega to respond by previous loquacity on town political- at least to explain why to continue in his

If for no other reason, he should realize that his generously volunteered commentary attracted customers and increased his flourishing business.

Like others, we find it difficult to accept this reversal in form of such an active campaigner whose support is so eagerly sought by all candidates in all Belleville elections. Break out of the shell Jackie, everybody likes you just the way you always were! What can happen to all those politicians if you don't become involved? Think it over...you'd miss the thrill of the grand old game of American politics. It's near time to get warmed up for the big game coming up.

I read in the newspaper that Peter Shapiro is trying to put the blame of the 27 percent increase in county taxes on the Freeholders. It was Peter Shapiro who introduced the budget to the Freeholders in the first place, and at least two Freeholders voted against it.

It is time Peter Shapiro put the blame on himself. He has been in office eight years, and he has had enough time to show Essex County what he can do for it. Since he has been in office, things have

surplus when he came into office, and now we have a 22 percent tax increase.

On November 4, I am voting for Nick Amato. Here is a man who has been employed by the County, just like Peter. But unlike Peter, for 13 out of 15 years of his employment, he has returned a surplus to the County. This kind of record has earned Nick Amato the right to be Essex County's next Executive, and my vote.

Michele Monica  
Perry Street

To the editor:

I am a Belleville resident, and the county share of property taxes in my town went up over 56 percent.

To me, this means an increase in my tax bill of about \$500. This is an increase which I cannot tolerate! Peter Shapiro seems to have little concern for the taxpayer. He has been in office eight years. We have given him enough of a chance. It is time for a change.

On November 4, I am casting my vote for Nick Amato. Mr. Amato seems to be interested in what concerns the taxpayer. He has been County Surrogate for 18 years, and for 13 of those 15 years, he returned a surplus to the County. What Nick Amato did for the Surrogate's Office, he can do for the whole County. Nick Amato's getting my vote on November 4.

Frank P. Stanco  
Magnolia Street





Bifanti on...

# Belleville

November, 1986

## Community Bond

In a very real sense a municipal bond is a community bond—the act of tax-paying townspeople "pitching in" on a worthy project to better the township.

This romanticized notion of bonding is enhanced when the aforementioned town project is a necessary and highly visible one.

Like a new police station.

Or a renovated middle school.

These are the kind of town projects citizens point to with collective pride, during examples of town spirit, cooperation, and firm resolve to improve the local quality of life.

What price the bond?

Bonding is also an example of town commitment. It's thousands of homeowners paying more in annual taxes not once or twice, but for a generation.

One town official describing the effect the ill-fated \$10 million municipal complex would have had on taxpayers put it this way: "\$10 per family, per month doesn't seem like too high a price to pay—not for something people could see every day, something that shows things are improving in Belleville."

Of course, the other side of the argument is that it's \$10 per month for 20 years of months, 240 in all.

However, the town official inadvertently provides us with a simplified ballpark yardstick which may be used to roughly measure the way complicated bond issues hit the average homeowner in the pocket.

About \$1 for every \$1 million bonded.

Thus, using this ballpark yardstick we may conclude that the current town project, which calls for the people to "pitch in" and pay back a \$5 million bond, would cost the average taxpayer about \$5 per month.

The \$5 million figure (\$5 per family per month) is a logical compromise, once it falls halfway between the original \$10 million project many townspeople support, and no project at all.

which many other townspeople support. Further, there is solid evidence resulting from April Belleville Times readers poll which suggests that a clear majority of Belleville support some kind of middle ground.

### Bonds may unite — or divide

Although municipal bonds obviously link the community through financial commitment, socially they can either unite or divide the community depending on the end result.

If the bonded project winds up being a good value for the money, the sense of accomplishment, pride, and cooperation will be town-wide, and the bond that made it possible will be just that — a tangible unity of the people at every level.

However, if the bonded town project is not perceived as a good value, or if other worthy projects have to be put on the back burner, then there is a chance that the townspeople will not be satisfied — and resentment and division will result.

### Two possible bond projects

In Belleville, there are two obvious pressing needs, both of which could feasibly be resolved through bonding at this year's attractive market rates (well under 10% interest.)

The first (and possibly foremost) need is the new public safety building, a well-publicized and controversial project which the board of commissioners has already acted on.

The second need (which many Belleville residents believe to be just as important) is the renovation of the middle school. This project has been estimated at \$3 million by an architect appointed by the board of education.

The board of education, according to board president Phil Linfante, has attempted to deal with renovating the middle school without bonding. The current budget called for nearly \$500,000 in capital outlay to attack about one sixth of the school's needs starting with the top priorities first.

However, the budget was since scaled back to reduce the school tax increase and only about \$280,000 is earmarked for middle school renovation this year — about 9% of what's needed.

In the past the school board has discussed bonding as one option for bringing the middle school up to par. Why is a renovated middle school a significant board priority?

One, because the middle school is itself a bond of sorts — the link which all public school students pass through enroute to the high school. Here, any inequities which may or may not exist in the township's grammar schools are equalized, and the student is prepared to better meet the challenges of high school.

Two, the middle school is on Washington Avenue and its improved appearance would surely be a step in the right direction for township renewal.

Three, renovations are necessary — beginning with water-proofing the leaks, weatherproofing and other pressing concerns and continuing down the list of additional needs.

But, as one school official tells it, the controversy over increased taxes and the police station bond resulted in a "backlash" on the school budget. That budget, the only one citizens vote on directly, was defeated by a margin of 3-1 last April.

So now we have two pressing needs — two proposed town projects — which appear to be juxtaposed, potential competitors for a limited amount of funds.

If \$5 million is the most the townspeople are prepared to finance, and if all of that is used for the police station — what will

happen if the school board decides to seek a bond issue for renovating the middle school? Will the townspeople say "enough is enough" and vote it down? It's quite likely they will.

### Two for the price of one?

Is it possible to get both — a renovated middle school and a police station for \$5 million? Let's see.

Three years ago a police station, designed by Engineer Neil Siciliano, was estimated at \$1.6 million. That plan has recently been resurrected by The Concerned Citizens of Belleville to demonstrate that a four-sided building could cost less than the eight-sided \$4.4 million plan currently in the works.

Two years ago, the middle school renovation was estimated at \$3 million. Add both figures up and we get \$4.6 million for both with \$400,000 left over for inflation. So maybe \$5 million or \$4.5 million, split between both boards could take care of Belleville's two greatest needs. It's worth looking into.

But whether or not the middle school is renovated through capital outlay or another bond issue, there is no question that the more money spent on the police station, the less chance of fully renovating the middle school through popular taxpayer support.

Thus, the Board of Commissioners as well as The Planning Board should be fiscally prudent and cost conscious in scaling back the police station.

Every tax point shaved is a tax point which may be acceptable to taxpayers down the road for improving the middle school. For high a municipal bond will break the community bond.

And the schoolchildren of Belleville will be the losers.

— Christopher Bifanti

## Frade's DELI\*

Celebrating Our First Month at our new location SPECIALS

FREE DELIVERY

BAKED VIRGINIA HAM

**\$2.09** 1/2 lb.

LEAN HOT PASTRAMI

**\$2.29** 1/2 lb.

Slicing PROVOLONE

**\$1.59** 1/2 lb.

NEW HOURS Mon. thru Sat. 7 AM - 7 PM Sundays 8 AM - 3 PM

Circle U HARD SALAMI

**\$1.99** 1/2 lb.

10% off all Taystee Bread products

EXTRA LARGE EGGS <b>89¢</b> doz	IMPORTED ITALIAN TOMATOES 35 oz. can <b>89¢</b>	Pecorino Romano GRATED CHEESE <b>\$3.29</b> lb.
------------------------------------	---	--

\* WE ACCEPT FOOD STAMPS

311-313 Union Avenue  
Belleville • 759-3509

CLASS

## BEN'S LOCK AND GLASS

(Formerly of Contemporary Glass)

- Plate & Safety Glass Replacements
- Commercial Door & Closer
- Repairs and Installation
- Replacement Windows
- Storm Windows & Doors
- Sliding Patio Doors
- Plexiglass
- LEXAN
- Screens Repaired
- Custom Mirrored Walls
- Tub & Shower Enclosures
- Locks Installed
- Keys Made
- Furniture Tops
- Shutters

FREE ESTIMATES!

CALL TODAY 661-3857

Why are so many women talking about...

## OSTEOPOROSIS

Because osteoporosis will affect 1 of 4 older women. Because every year, this loss of bone strength causes 1 million fractures and costs \$4 billion. And because—at last—there's something we can do about it.

MEDICAL SCIENCE is understanding more and more about the problem with osteoporosis—how to slow or stop an ongoing loss of bone strength. Now an effective measure to slow down, and how to treat people whose bones are breaking because they're weakened by osteoporosis.

We are now able to measure bone density with a simple, painless procedure. But our programs go beyond diagnosis of fracture risk. We offer education and counseling services that will help you understand and take control of your own treatment.

Bones reach their peak strength in our 30s. By detecting those women with low peak bone density, timely preventive measures can be taken to slow down the process of reducing the risk of osteoporosis. By measuring bone density, we can detect the risk of osteoporosis. Those women at highest risk can be selected for treatment or other therapy to slow the loss of bone that occurs in the following years. New therapies offer the promise of a slowing bone density loss.

We look forward to serving our community in the years ahead. From here, questions about osteoporosis—call us. We have the answers.

ESSEX OSTEOPOROSIS DIAGNOSTIC CENTER

50 NEWARK AVENUE BELLEVILLE, NJ (201) 751-6661

MELVIN H. FREUNDLICH MD MEDICAL DIRECTOR

# INTRODUCING NUTLEY SAVINGS' TELEPHONE RATE LINES

Now you can call Nutley Savings' New Telephone Rate Lines, 24-hours a day, for current quotes on available rates for Certificates of Deposit, Money Market Accounts and Mortgage, Home Improvement and Auto Loans.

Our special seven-days-a-week phone lines give you up-to-the-minute information on current interest rates, qualifications and terms for all your financial needs.

FOR INFORMATION ON CERTIFICATE OF DEPOSIT AND MONEY MARKET RATES:  
CALL THE SAVINGS ACCOUNT RATE LINE\*  
**661-3915**

FOR INFORMATION ON MORTGAGE, HOME IMPROVEMENT AND AUTO LOAN RATES:  
CALL THE LOAN RATE LINE\*  
**661-3917**

\*Rate Lines listed with New Jersey Bell Information

## Nutley Savings

AND LOAN ASSOCIATION

celebrating "Our first 100 years"

MAIN OFFICE: 371 Franklin Avenue • Nutley, N.J. 07110 • 661-3200  
BRANCH OFFICE: 221 Washington Street • Newark, N.J. 07102 • 662-7090

# Belleville school officials in New Jersey convention

Eight school board members and administrators from the Belleville School District are attending Workshop '86, "Challenges and Choices," a conference for the state's public school leadership in Atlantic City from Oct. 15-17.

The conference offers nearly 150 training and informational sessions on subjects that are integral to the operations of our district's schools. Board President Phil Linfante said.

The programs address discipline, curriculum planning, staff evaluation, increasing the efficiency of business operations, school safety, labor relations, and student absenteeism, among other topics.

Nearly 7,000 school board members, administrators, and other educators are attending the 35th annual Workshop. This year's conference was sponsored by the New Jersey School Boards Association, New Jersey Association of School Administrators and New Jersey Association of School Business Officials.

Explained Linfante, "At Workshop '86 we will have the opportunity to exchange views and discuss educational issues with fellow board members and administrators across the state. Our schools will definitely benefit from such an exchange."

Those in attendance at Workshop '86 from Belleville include Dr. Anthony D'Agostino, Dr. Joseph M. Capello, Seymour Grossman, Ernest Zappi, Barbara L. Calise, Dan Borgo, Phil Linfante and Michael P. Nardiello, Superintendent of Schools.

According to Linfante, expenses for attendance at Workshop '86 were approved by the board as part of the budget for the current school year. He estimated the cost at about \$150 per attendee.

"The monies allocated for attendance of board members at the conference are a very small part of the total district budget," the board president noted. "The knowledge and training we gain at Workshop '86 will prove in-

valuable and will bring us new ideas and a better understanding of the state and national issues that affect our community's schools."

The New Jersey School Boards Association has conducted Workshops since 1952. It was joined in sponsorship of the conference by the state administrator's association in 1978 and by the school business officials organization the following year.

The Belleville School District submitted four possible presentations to the convention committee. Linfante said the four presentations were viewed favorably by the committee and that Belleville school officials were invited to actively participate in the workshops. The four presentations are:

## 1a. Belleville's Special Education and Seniors (S.E.A.S.)

The Belleville Special Education and Seniors program began as a pilot program in the Spring of 1985. It is an after school arts and crafts program held once a week for two hours. The program is conducted for an eight week period during April, May and June.

Special Education students from the Belleville School District and Senior Citizen volunteers from the community meet at the Little League Field House. Monetary aid for the arts and crafts projects, snacks, and end-of-the-program party is provided by the Belleville Kiwanis Club and Belleville's Special Education Parent and Professional Organization (SEPPPO). Transportation is provided to the program by the school district, with parents and grandparents transporting the children back home. The program consists of about 15 children ages 8 to 16 and about 12 senior citizen volunteers.

The program has been successful in providing an enjoyable, nurturing atmosphere with a recreational theme, for both the special education students and the senior citizens. The program's true success, in two years of operation, has been measured from the increased number of senior citizens wanting to work with handicapped children and the number of children requesting an opportunity to participate.

## 1b. Job Placement Program for Secondary Special Needs Students

The Belleville Board of Education, utilizing funds from a Title VI Part B grant, began a Job Placement Program in May 1985. This program is geared toward

preparing special needs students in grades 9-12 for employment. Students enrolled in the program receive vocational counseling and guidance to aid them in choosing a career. They are also instructed in resume writing, completion of job applications, preparation for an interview and independent living skills. Classroom activities culminate in job placement for students in the program.

The program is enjoying great success due, in part, to the fine response of local business people who are willing to hire students with special needs. 70% of Belleville High School's 40 handicapped students, 16 years and older, were placed in jobs during the 1985-86 school year. All of the high school's 88 handicapped students, grades 9-12, received regular class instruction in job search techniques, interviewing, and keeping the job. A Career Planning Curriculum designed to earn 5 credit hours was developed and implemented for the 1986-87 year.

## 2. English as a Second Language

Mrs. Hawthorne, principal of School 7 and Mrs. Gee, teacher of English as a Second Language, will explain the educational process they implement to make the students adept in the use of the English language. Belleville's program has received high grades from the state, according to Linfante.

## 3. Public Relations and our Senior Citizens

Mr. Ciccone, Belleville High School principal and Mr. DePaulo, Director of Related Arts, will explain how they have brought the educational and senior citizen communities together.

Senior citizens may attend all school functions at no cost. They can use the cosmetology and auto repair services for the cost of the materials used. The seniors are invited to attend two luncheons at the high school each year.

Linfante said, we are proud to say that we view our senior citizen population very highly.

## 4. Dance Incorporated into Physical Education

School 3 has been designated as a fine arts program. Emphasis has been placed on dance as one of the art forms. Combining the conditioning of physical education with the enjoyable experience of dance has proven to be a happy marriage. Mr. MacArthur, principal of School 3 will explain this program at the convention.



## Bookmarks...

News of the Belleville Public Library

**Editor's note:** This is the first installment of a new Belleville Times column which will spotlight upcoming activities at the Belleville Library. The library has emerged as the center for Belleville cultural activity, with an ever-expanding offering of plays, lectures, film presentations, exhibits, special programming — it's not just books anymore.

This column, which will appear bi-weekly or as activity dictates, supplements the Times' monthly publishing of the library's calendar of events. As always, the library monthly calendar will continue to appear in the edition prior to each new month.

## Mystery Belleville donates business cassettes

A Belleville business executive has donated several business cassettes to the collection of the Belleville Public Library. The fast track cassettes include "Corporate Cultures" by Terrence Ideal and Allen Kennedy, "Effective Executive" by Peter Drucker and Robert Hall, "Funny Money" by Mark Singer, "Further up the Organization" by Robert Townsend, "Headhunter Strategy" by Ken Carson, "A Passion for Business with the Japanese" by Mark Zimmerman, "The Art of the Deal" by Buck Rodgers.

Also "In Search of Excellence" by Thomas Peters, "Letitia Baldrige's Complete Guide to Executive Manner," "Managing" by Harold Geneen, "Nothing Done" by Robert Allen, "A Passion for Excellence" by Tom Peters, "Re-Inventing the Corporation" by John Naisbitt, and "Winners" by Cortier Henderson.

## Treasure Gallery displays student's art

Currently on exhibit in the Meeting Room of the Belleville Public Library is the art of the students of Gladys Sherman of the Treasure Gallery of Belleville.

Among the students exhibiting are Christina Alfano, Julian, Marie Minatze, Ernestine Minichini, Brian Romano, Carol Seward, Erica Valerie and Otto Zappi.

Mrs. Sherman is a well-known New Jersey artist, who has taught widely in this area and was especially helpful in arranging this combined exhibit of her students.

The exhibit can be viewed during regular library hours.

## Lionel trains pull into library

Currently on exhibit in the display case of the Library are the Lionel Collector Trains of Michael Accuzzo of Belleville. When his children were little, Accuzzo devoted an entire room to his train collection, which he is now sharing with the library in this unique exhibit.

When his children grew older, Accuzzo began painting railroad tracks from his model trains. One of his paintings earned first place in the Library's annual art show. In addition to his oil painting, he enjoys wood carving a great deal. He also lectured on wood carving and his hand-made armor at the Library.

The exhibit can be viewed during regular Library hours.

## Nutritional consultant will advise on health and beauty

Andrea Colucci of Belleville, a nutritional consultant and beauty advisor with Shaklee Products will provide a series of programs at the Library. On October 21 and 22 at 10:30 a.m., she will discuss skin care. She will tell about the nature of the skin, what to do to have healthy skin, how diet affects the skin, and how to give a facial. On October 28 and 29 at 10:30 a.m. she will discuss color analysis and makeup. On November 3 at 7 p.m. she will run a nutritional workshop on stress.

The workshops are open to the public. Call the Library at 450-3434 to register or come in person to the Library to register.

(continued on page 23)

## ANNOUNCEMENT

DR. WAYNE JAMES CAPUTO announces the opening of his office for the practice of **PODIATRY-MEDICINE AND SURGERY OF THE FOOT, SPORTS MEDICINE AND DIABETIC PROBLEMS OF THE FOOT** at:

**The Clara Maass Professional Center**  
5 Franklin Ave. - Suite 108  
Belleville, N.J. - 751-7752



Dr. Caputo received his professional training at the New York College of Podiatric Medicine. His post graduate training consisted of a two year foot surgical residency at Baptist Medical Center, New York where he held the position of chief podiatrist. He is presently entered into group practice in Roselle Park.

DR. CAPUTO  
Podiatrist

Day, Evening & Saturday Hours Available

## An AUTUMN Sale

**40% off**  
Reg. Prices Suits • Coats • Dresses • Skirts

**50% off**  
Reg. Prices FALL & WINTER DESIGNER FASHIONS  
Dresses • Suits • Ensembles  
Gowns • Shifts • Wear • Deals

**80% off**  
Reg. Prices GIVEAWAY CLEARANCE  
Fashions For All Seasons  
Buy now for your vacation in the sun  
SIZES 4-20

**TRÉS**  
30 CHURCH STREET, MONTECLAIR, NJ 07040  
744-4444 744-2224  
Fruit and Bulk Discounts 95-95 Mon-Sat  
For The Fashionables

### WESTERN'S THE ONE

**CLERICAL**  
Typists and Transcribers  
Secretaries — Clerks  
**Bookkeepers**  
Word Processors  
**MARKETING**  
Product Demonstrators  
Convention Aides  
Sales and Helpers  
**FACTORY WAREHOUSE**  
Assemblers and Packers

**Western**  
TEMPERARY SERVICES  
EOE M/F

**BLOOMFIELD**  
554 Bloomfield Ave.  
748-1914

**LYNDHURST**  
235 Ridge Road  
896-1555

**FAIRFIELD**  
575-0021

**CLIFTON**  
472-8333

**JERSEY CITY**  
792-0056

**NUTLEY FOOT CARE CENTER**  
**Dr. Robert Lardiere**  
Surgeon - Podiatrist  
"Complete Foot Care For The Entire Family"

230 Centre St.  
Nutley  
667-5070

**Pharmacy Footnotes**

**Vincent Cotzarelli**  
Reg. Ph.

**AT-HOME TESTING**  
The Food and Drug Administration (FDA) requires all home health testing kits to be tested and proven by the manufacturer. They must meet the same standards of safety, effectiveness and accuracy as similar professional laboratory tests. Not all at-home testing kits are completely accurate. The tests were designed only as an adjunct to professional medical care, not as a substitute. There are monitoring devices that screen for high blood pressure or hypertension. Kits for the diabetic help in management of that disease. Ovulation predictors work by measuring a rise in the luteinizing hormone (LH). LH triggers the actual release of an egg. There are more than 30 different at-home pregnancy testing kits on the market. Ask your pharmacist about what is available and how it works.

We'll be glad to answer your questions on these health testing kits. Just call us at 759-1956 or 759-1968. **ROSSMORE PHARMACY**, 338 Washington Ave. We have a complete prescription department and are Blue Cross and Medicare approved. Your Doctor Knows Us! Your Doctor Trusts Us! Russell Stover candy, Times watches, transistor radios and gift items are handled. Open Daily 9 am-10 pm, Sundays 9 am-9 pm.

**HANDY HINT:**  
At-home diagnostic tests can be extremely cost-effective when they result in earlier professional care.

## NOW OPEN FOR BUSINESS

**MAURO'S**  
Pizzeria & Restaurant  
558 Franklin Ave. Belleville  
Phone 751-6016  
Open: Mon.-Sat. - 11 a.m.-11 p.m.

**MONDAY NIGHT FOOTBALL SPECIAL**  
**13<sup>95</sup>**

**MUSSELS**  
**2<sup>95</sup>**

## Join the Fun!

at

# TOWN PUB'S 15th Anniversary Celebration

We're rolling back our entire menu 15 years with prices to match.

Imagine...  
**1971 Lunch & Dinner Prices\***  
**Our Way of Saying Thanks — We Love You —**

**OCT. 21 - 22 & OCT. 28 - 29**  
**ALL DAY**

**378 Broad Street, Bloomfield**  
**743-9557**

\*Take-Out Orders & Coupons Not Included.

**AT-HOME TESTING**  
The Food and Drug Administration (FDA) requires all home health testing kits to be tested and proven by the manufacturer. They must meet the same standards of safety, effectiveness and accuracy as similar professional laboratory tests. Not all at-home testing kits are completely accurate. The tests were designed only as an adjunct to professional medical care, not as a substitute. There are monitoring devices that screen for high blood pressure or hypertension. Kits for the diabetic help in management of that disease. Ovulation predictors work by measuring a rise in the luteinizing hormone (LH). LH triggers the actual release of an egg. There are more than 30 different at-home pregnancy testing kits on the market. Ask your pharmacist about what is available and how it works.

We'll be glad to answer your questions on these health testing kits. Just call us at 759-1956 or 759-1968. **ROSSMORE PHARMACY**, 338 Washington Ave. We have a complete prescription department and are Blue Cross and Medicare approved. Your Doctor Knows Us! Your Doctor Trusts Us! Russell Stover candy, Times watches, transistor radios and gift items are handled. Open Daily 9 am-10 pm, Sundays 9 am-9 pm.

**HANDY HINT:**  
At-home diagnostic tests can be extremely cost-effective when they result in earlier professional care.



## Crimebreaker!



### Is shoplifting really stealing?

Yes, it is.

Sometimes kids do it because they think it's fun, or try it on a date when they're with a group of kids who start talking and fooling around. Has that ever happened to you? If it did, what would you do?

Shoplifting is taking something without paying for it. But you really do pay for it eventually.

Storekeepers have to pay for what they sell, and they have to add to the cost of anything that is stolen. Since we all have to buy things from stores, we all pay the extra cost of stolen items.

So, what can you do?

Well, if you're with some kids who want to try shoplifting, you can tell them that you don't want to and that it's not really getting something for nothing. If you ever see anybody in a store not pay for something, you can quietly tell a salesperson or cashier and they will see if there's a problem.

You might have to think about this a while, but what you pay because of shoplifting can be much more than a nickel on a candy bar. If you wanted to buy a radio, for instance, the storekeeper might have to charge \$5 or \$10 more if he had been the victim of a lot of shoplifting.

Shoplifting is stealing, and you can help stop it and keep prices down — and that's really a good deal.

## More armed robberies occur

(continued from page 1)

The back seat passenger, also in his twenties, is described as white, with medium length black hair, blue jeans and orange sneakers.

Investigating the case for the Belleville Police Department is Detective Barton Rossi.

### Dear Lady I've got a gun

In Tuesday's incident at the Belmont Avenue Pathmark, the use of weapons was threatened but no weapon was ever actually revealed, Captain Petrillo told the Times.

According to Petrillo, the cashier at aisle 3, Aurea Rosagron, Rosemont Avenue Newark, was handed a note by a light-skinned, black male wearing a beige trench coat, sunglasses, and a black knit cap. He is believed to be about 25.

The suspect was on line with a cart of groceries but instead of giving cash for his purchase, he gave Rosario a not-demanding cash.

The note read "Dear Lady I've got a gun in my pocket," and went

on to state that a partner was in the building with a bomb, and that the cashier was to give the suspect all of the money in the cash register.

The amount of money was undetermined at prestime, but police estimate the figure to be in the area of \$1000.

Captain Petrillo told the Times that a New Jersey State Police composite artist was scheduled to make a sketch of the suspect, which will be released to this newspaper when finished.

Police did not know as of Tuesday which way or how the suspect or suspects fled.

Investigating the incident is Detective Joseph Rominia.

### House burglarized

In other Belleville police news, a burglary was reported at 68 Academy Street. The victim, Aida Reyes, 29, stated she left her

house on October 8 and, upon returning later that day, found her door and bedroom window ajar.

Reyes told Belleville Police that numerous articles of jewelry were missing, including bracelets, rings, and chains. Also reported missing was a cassette radio.

No value was given on the missing items.

### Pickers shot with b.b.'s

In a bizarre alleged turn of events, the pickering of Belleville custodians, maintenance workers, and bus drivers at last Friday's Belleville-Mountain side youth football game was the scene of a b.b. gun attack on two protesters.

Captain Petrillo said two Belleville Custodian and Maintenance Workers Association members were shot at by b.b.'s, according to a complaint filed by one of them, James Karamolegos, 34, of Belleville Avenue.

Karamolegos said that at 7:59 p.m., Friday, October 10, he was struck in the back of the head by a b.b.

A second victim, Vincent Fazzari, of Barbara Street in neighboring Bloomfield, was struck in the forearm area. However, Fazzari did not file a complaint.

Petrillo said that "neither wished nor required medical attention," according to the reports of his men on the scene.

Police thoroughly checked the area, but found no suspects. The case has since been referred to the Belleville Police Department's juvenile division.

OCTOBER IS CRIME PREVENTION MONTH

TAKE A BITE OUT OF

CRIME

## Diabetes coalition sponsors workshop

Mountainside Hospital and the Essex County Diabetes Education Coalition will sponsor a five session course, "Diabetes Education for Life," for persons with diabetes and their families. Classes will begin on Tuesday, Oct. 21, and will continue on October 28, November 4, 11 and 18. Each class will meet in Mountainside Hospital's private dining room from 7-10 p.m.

"Diabetes Education for Life" courses are for insulin dependent and non-insulin dependent persons with diabetes. Participants may be newly diagnosed with the disease or have had diabetes for a long time.

Classes cover a broad range of topics on diabetes including medications, nutrition, exercise, blood glucose testing and the feelings associated with having diabetes.

The cost for the five session course is \$35 per family. Preregistration is necessary. For more information, or to register for the program, please call Carol Abbott, R.N., Educational Coordinator, at 429-6000.

## CALLING ALL YOUTH A NEW HAPPENING AT

**SILVER LAKE  
BAPTIST CHURCH**  
166 Franklin Street  
Belleville, New Jersey

FILM: "NEVER ASHAMED"  
SUNDAY, OCT. 26 AT 7:00 P.M.  
Refreshments Served

FOR MORE INFORMATION CALL 759-3762  
Mr. Rocco Colucci, Director - Rev. Gerald Fortunato, Pastor



THE FILM "NEVER ASHAMED" IS A POWERFUL MESSAGE OF HOPE AND FAITH. IT IS A MUST-SEE FOR ALL WHO BELIEVE IN THE POWER OF GOD. IT IS A MUST-SEE FOR ALL WHO BELIEVE IN THE POWER OF LOVE. IT IS A MUST-SEE FOR ALL WHO BELIEVE IN THE POWER OF THE SPIRIT.

## Anti-drug hotline is swamped with calls from crack users

Continuing the trend of July 1986, 70 percent of the calls on August 1986 to the 643-5050 UNHOOKED drug and information line came from users of crack—the highly concentrated form of cocaine. This coincides with the increase in crack users entering drug programs in New Jersey. Also increasing are the number of calls coming from family members who don't know where to go when their loved one is on drugs.

UNHOOKED provides New Jersey residents with confidential

substance abuse information and makes referrals to treatment programs throughout the State. The line is operated from 9 a.m. to 5 p.m. Monday through Friday and is part of Integrity, Inc., a New Jersey based drug and alcoholism rehabilitation program.

The Crack users were primarily referred to the over 150 treatment agencies in the UNHOOKED H.H. lines. Recognizing the need for families to receive counseling on how to deal with drug problems, referrals were also made to family counseling agencies.



**"WE WORK WELL TOGETHER"**  
Old Fashioned Expertise and High Efficiency Service  
Full Service Oil Company

- Plumbing & Heating Contractors
- Automatic Delivery • Budget Payments & Cash Discounts
- Design & Service Gas/Oil Heating Systems
- E-Z Credit Approval - 100% Financing

WEIL-McLAIN

HIGH EFFICIENCY

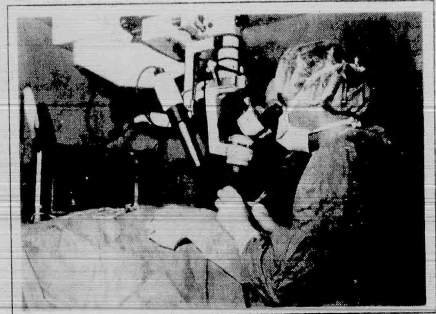
HEATING EQUIPMENT

**CEDAR HILL  
OIL CO.**  
485-6400

**FOR  
PROMPT  
SERVICE**

**PAR ENERGY**  
485-6404

## THE MOUNTAINSIDE HOSPITAL



### EYE CARE EXPERTISE

Mountainside's Ophthalmology Department provides medical expertise and state-of-the-art technology for cataract and laser surgery, intraocular lens implants, glaucoma therapy, corneal transplants, refractive surgery, retinal problems, eye plastic procedures and orbital disorders.

For a referral call our Physician Referral Service:

429-6190

**Health CARE Excellence**

Glen Ridge/Montclair, N.J.

## Freeholders supportive

## Shapiro proposes new program for addicts

Essex County Executive Peter Shapiro announced a proposal for a treatment program for county prisoners designed to combat recidivism among inmates with drug and alcohol problems.

The proposal was presented by the administration to the Board of Freeholders for their consideration at the October 1 meeting.

"Authorities estimate that between 90 and 95 percent of all crimes committed today have drugs or alcohol at their root," Shapiro said. "Until we deal with this root cause, our prisons and court system will continue to be a revolving door."

"If we take a crack addict and do nothing other than put him in jail for 90 days as a first offender, you can be guaranteed we are going to see him again as a second offender and then as a third, usually to steadily worsening crimes."

The Executive added, "We've got to break the back of this menace and the only way to do it is to get people off drugs and alcohol."

Shapiro's proposal would focus on county inmates whom the courts deemed eligible for place-

ment in treatment centers. The level of security they require, as well as the need for alcohol and drug treatment would determine if they were eligible for the program.

Freeholder President Jerome D. Greco, in a letter to Shapiro said, "Your Administration's proposed drug and alcohol program targeted for County prisoners is a concept well worth investigating."

He commended Shapiro for "coming up with an idea that, at least, attempts to begin to deal with the problem," and emphasized "the Board's sincere desire in working with the Administration to reduce drug and alcohol related problems that lead to recidivism among our County's prison population."

Freeholder Joseph Parlavaccchio said, "The concept obviously has merit. As a Freeholder I am greatly concerned about the increase in drug and alcohol related crimes. Something must be done to address this menace."

The number of crack and drug related crimes has boosted the prison population in Essex County by 17 percent since July. Last month Shapiro announced plans

to expand jail space by 75 to accommodate the increased numbers.

"This is an important treatment program that will help alleviate overcrowding now and in the future. It aims treatment at the addiction which is at the basis of such a great percentage of crime," Shapiro said.

Shapiro said statistics show alcohol is involved in more than two-thirds of the nation's homicides, half the nation's rapes and incidents of child molestation

and up to 70 percent of the nation's assaults.

The U.S. Justice Department found that heroin addicts committed at least 100,000 burglaries, robberies and automobile thefts each day. That number translates into 20 percent of all property crimes in the nation.

Although there are no solid statistics, Shapiro said if we added the property crimes committed by cocaine, crack and other addicts, we could probably "double" the figure.

## Edson Tool subdivision debated

Hudson Heating Wholesalers Co. presented its arguments for the subdividing of the old Edson Tool Company building on Cortland Street, at the Tuesday meeting of the Zoning Board.

Represented by Michael Casale, the firm presented its proposal to create four separate units of the former site of heavy industry.

One section would be for warehousing; another distribution; and the other section for related office use.

Casale noted that the building has been in a heavy industry zone

for many years, even was there before the zone was created.

The aim would be to replace the heavy industry use with light industry and office functions.

Hudson Heating Wholesalers plans to lease out the property. Objections have been raised by residential property owners who live across the street from the old tool works.

They will have the opportunity to express their views at the next meeting of the board, scheduled Oct. 22.

Casale will present an additional expert witness at the meeting.



**Mightier than the Sword**—Assemblywoman Marion Crecco (R-30th) accepts a ceremonial pen from Governor Thomas H. Kean. Kean Crecco used the pen to sign the Civil Service reform bill, which she co-sponsored.

## Governor Kean signs Crecco civil service bill

Gov. Thomas Kean has signed the Civil Service reform bill, a measure marking the first significant changes to a 178 year old employment system that critics said lacked incentives for hard workers and tolerated chronic absences.

The bill, co-sponsored by Assemblywoman Marion Crecco (R-30th) will replace the Department of Civil Service with a new

Department of Personnel run by a commissioner of personnel and a merit system board.

"The new rules that will develop from this bill's signing will serve as a testament to the state's intention to promote productivity and efficiency in the public workforce," Crecco said.

"The merit system will work to make government more responsive to residents and will make government more efficient by rewarding eager workers' productivity."

The bill, A 2164, preserves the principle of seniority, maintains veterans' preference, gives employees more rights during disciplinary proceedings and prohibits an excessive number of job titles from being included in the physical and executive service.

The bill also provides for civil service in clerical, career and non-career employees. The number of non-career employees in the service would be limited to no more than 15 percent of the entire executive work force.

Other provisions of the bill will:

- Provide protection from reprisals to an employee who reports mismanagement or abuse of authority. This protection does not exist in current Civil Service law.

- Prohibit local governments from choosing not to participate in the new system and abiding by the regulations.

- Make it easier to remove a person from an employment list because of a criminal record.



**Town attorneys, past and present**—Republican candidate for Essex County Executive and former Essex County Surrogate Nicholas Amato (right) is also a former Belleville Municipal Attorney. Pictured (left) is recently inducted Belleville Municipal Attorney Frank Cozzarelli. The two lawyers paused for a picture at the Oct 3 Columbus Day ball held at the Chandelier in Belleville. (Photo by Christopher Bifano)

## Amato breakfast slated

Friends of Judge Nicholas Amato, Republican candidate for County Executive, will be hosting a breakfast, October 26, 1986 at 9:30 a.m. at the Chandelier Restaurant, Franklin Avenue, Belleville.

Toni Marone is chairman. co-

chairmen are Neil Monica and Tony Agresti. Comm. Joseph McGreevy is honorary chairman. Angelo Risoli is Republican town chairman. All will be attending. Others wishing to attend may contact Toni Marone at 759-6455.

## art galleries royale

## OIL PAINTINGS

Large Selection On Display  
Large Gallery in New Jersey

Lithographs 9 Prints  
Photos Painted on Canvas  
Stock & Custom Frames  
Complete Framing Department

500 Stuyvesant Ave.  
Lyndhurst, N.J.  
438-3075

## DR. RALPH J. ATTANASIO D.D.S.

has returned to his full time private practice at the original location

517 Roseville Avenue  
Newark, N.J. 07107

Hours By Appointment • 485-5045

Dr. Attanasio is no longer practicing dentistry in association with Group Dental Associates of Nutley

## STOREWIDE FALL SALE

Thurs.-Fri.-Sat. Only  
Oct. 16-17-18

20% Off All  
Full Figure Fashions

Elegant Fashions in  
LARGER SIZES

Sizes 14 to 46



611 Bloomfield Ave. Montclair  
783-8494

Store Hours: 10-6  
Thurs. 10-6  
Closed Sunday  
Major Credit Cards Accepted

**\$19**  
**DENTAL EXAMINATION\***  
Includes Cleaning  
and X-Rays  
(Reg. \$95.00) With This Ad Only

- INSURANCE HONORED
- SPECIAL ATTENTION TO SENIOR CITIZENS

\*Offer expires 10/31/86

CALL TODAY FOR  
AN IMMEDIATE  
APPOINTMENT  
**284-1011**

Dr. S. Herman

**GROUP DENTAL ASSOCIATES, P.A.**

175 Franklin Ave., Nutley, N.J.  
Open Evenings, Weekdays & Saturdays

## BEST OF BOTH WORLDS

"Personal Fitness Centers  
Where Fitness Gets Personal"



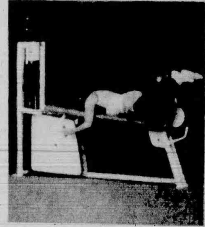
New generation nautilus  
free weight machines at  
the Belleville facility

- personal supervision
- nautilus
- exercise classes
- nautilus leverage
- free weight machines
- free child care
- sun tan bed
- diet programs

- nutritionist
- massage therapy
- chiropractor
- showers
- yoga
- exercise bicycles
- nordic ski machine
- men's & women's locker areas

## Personal Fitness Nautilus Center

495 Franklin Avenue, Nutley • 681-0778  
163 Washington Avenue, Belleville • 759-4402



Regular Nautilus  
machines in our  
Nutley facility

## BLOOMFIELD

FIRST TIME OFFERED  
DON'T MISS THIS ONE

1/2 Duplex - Maintenance Free. In excellent condition - Features living room, modern eat in kitchen with sliding door to large deck, 3 bedrooms - swimming pool - driveway. Won't last.



264 Belleville Ave. Bloomfield  
**743-2300**

## DENTALLY SPEAKING

By Drs. James D. Muglia  
and Paul N. De Maio

What is an abscess?  
Inside every tooth there are nerves & blood vessels. They are used to form the tooth while it is growing inside the jaw when you are a child. When the tooth gets a large amount of decay and touches the nerve it then begins to die if the nerve is not removed from the inside of the tooth by root canal therapy. If not removed the nerve begins to decompose or rot, creating a pressure for the pressure to go except out the bottom which is called the apex. A small cyst develops. As this cyst, which is inside the bone, becomes larger more damage is being done to the surrounding area. If the cyst becomes so large that it breaks through the bone and then the gum and reaches the outside, it forms what looks like a small pimple. This is what is primarily called an abscess.

Send Inquiries To:  
Dentally Speaking  
671 Franklin Avenue  
Nutley, N.J. 07110  
667-4421



# Holy Family parish welcomes new pastor

(continued from page 1)  
 Conception Seminary in 1960. Following his ordination in 1960, he was Associate Pastor at Our Lady of Sorrows in South Orange for two years and Pastor at St. Bernards in Plainfield for nine years. On October 4, he became the Pastor of Holy Family Church.

Father Fimiani said he was excited, happy and pleased about his new assignment.  
 "My roots are in the area," Father Fimiani said during a recent interview with The Times.

"In my opening homily I said the people will be my first priority. The parish name is Holy Family, and I would like that to be a fact in deed—not just in name," Father said.  
 Father said he has no immediate goals for the parish that first he had to sense the needs of the parish.  
 "I have asked people to invite me into their homes to meet neighbors, relatives and distant Catholics so I can know and learn the needs. I want to act on the needs of the parish not on my own," Father said.  
 While serving as Pastor of St.

Bernard's Church in Plainfield, Father Fimiani was appointed Dean of Deanry 27 of Southwest Union County. A Dean acts as an instrument between the Vicar and the Deanery to bring parishes together for sharing resources. A Deanery, which is a further subdivision of the Archdiocese, is a cluster of parishes.  
 Father Fimiani will be installed during Mass at Holy Family at 12:30 p.m. on October 26 by Bishop Joseph A. Francis, Vicar of Essex County, in the name of the Most Reverend Theodore McCarrick, Archbishop of the Archdiocese of Newark.



Playing for charity — When the Hoffmann-LaRoche charity theatre group staged a play to benefit the Community Mental Health Center, the result was a \$400 windfall. Pictured left to right at the check presentation are Angelo Risoli, director of Community Mental Health Center; Alice Ricci, executive director; and Len Silverman, vice president of Human Resources at Nutley-based Hoffmann-LaRoche. The Community Mental Health Center serves the tri-town region of Belleville, Plainfield and Nutley.

# Belleville enters the recycling age with entry in Essex collection plan

(continued from page 1)  
 and questions have been listed on the flyer.  
 Residences of five families or more are encouraged to make arrangements with the Township for special collection or to contact Richard Dombrowski of the Boy Scouts at 201-259-1258 in the evening.  
 The first day of collection will be in Zone 3 on Wednesday, October 22nd. This area extends

from Washington Avenue west to Belleville Park and a line extending from Parkview Avenue to Mertz Avenue. The southern boundary of Zone 3 is the Newark line, and the northern boundary is at Division Avenue.  
 According to Joseph Gracie, Commissioner of Public Works, "Every effort will be made to help Belleville residents in this recycling program."

The commissioner added, "Recycling of newspapers is the first step in reducing costs of disposing of solid waste. We are looking forward to a very successful collection system with the full cooperation from the Department of Public Works."

# 'Condo Town' control bill?

A resolution sponsored by Assemblyman John V. Kelly R-10th that would create a commission to combat the conversion of rental housing property to other uses was recently approved 85-14 by the General Assembly.  
 Kelly said the commission's function would be to study the factors that provoke owners of rental housing to convert their properties to condominium or cooperative ownership or to more profitable commercial uses.  
 A report containing the commission's findings and legislative recommendations would be submitted to the governor and legislature no later than Jan. 13, 1987.  
 "With alarming frequency tenants are being forced to leave affordable housing units because these units are being converted to high priced condos and other forms of housing," Kelly said.  
 "The reasons behind this trend

- besides the obvious desire for owners of the apartments to make more money, must be examined."
- Kelly said the 12-member commission would consist of the following:
    - The commissioner of economic affairs;
    - The commissioner of commerce and economic development;
    - Two citizens appointed by the governor who do not hold public office;
    - Two members of the state Senate, appointed by the president of the Senate, who are from differing political parties;
    - Two citizens, appointed by the president of the Senate, who do not hold public office;
    - Two members of the Assembly, appointed by the speaker, who are from differing political parties;
    - Two citizens appointed by the speaker who do not hold public office.



## ORTHODONTICS

AFFORDABLE BRACES FOR CHILDREN & ADULTS

CONVENIENT HOURS (EVENINGS TOO!)

DENTAL INSURANCE WELCOME

SECOND OPINIONS PROVIDED

NEVER A CHARGE FOR CONSULTATIONS

DR. MICHAEL B. FITZPATRICK  
 DR. BRUCE FOX

484 Washington Ave. Belleville  
 759-2173

## Anti-Diet Weight Loss

The New Alternative

**SUFFERING IS OPTIONAL**

Unique, 12-week program was developed to help healthy people to finally control their eating without the need to diet and the constant struggle against temptation.

**WHY WAIT?**

This small class experience is not another diet or food supplement program, but a new opportunity for a permanent change in your eating habits and your body.

**PREVIEW:** In just one hour you can see this effective solution to over-eating. We offer a full two-hour preview at our offices. Admission is \$10. Call early to reserve your place, as seating is extremely limited.

NEW CLASSES ARE FORMING NOW

CPC  
 Center for Psychotherapeutic Counseling  
 858 Joralemon Street  
 Belleville  
 PHONE 534-4138

# Whoever you are, we're your bank for life.

That's our commitment to the people of New Jersey. A bank that gives you the freedom to choose your bank when you need it most, with a new understanding of your personal banking needs. We want to be your bank today, that tomorrow. We want to be your bank for life. Here are just a few reasons why.

**Save thousands with a bi-weekly mortgage.**

- A lot of banks offer bi-weekly mortgage plans, but few offer plans including our innovative bi-weekly mortgage that can save you thousands of dollars in interest over a 30-year mortgage.

**A CD that renews itself.**

- We have a complete range of high interest savings plans for Money Market Investment Accounts to high interest CDs that renew themselves automatically.

**#1 in student loans.**

- We offer a range of student loans, including convenient student loans. As a matter of fact, we have the largest student loan portfolio of any bank in New Jersey.

**Home-equity loans — no up-front fee.**

- We have the lowest up-front fee of credit, as you borrow money, we charge a small, one-time fee to open your HELOC and a small monthly fee for the amount of the loan. Compare that to other banks.

**Customer Service Center.**

- And we make you the most important person in the bank. We have a Customer Service Center with a telephone always that you can call for help with your mortgage and bank rates.

Check your Howard account for interest, renew accounts, stop payments or just want the address of the Howard office nearest you, call 1-800-4 HOWARD and call us to the test.

We're the Howard. Your bank for life. For the life you live now and the life you've planned for the future. Come to the Howard and for life.

## the Howard

Your bank for life

Circle 10 on Reader Service Card  
 Circle 11 on Reader Service Card  
 Circle 12 on Reader Service Card  
 Circle 13 on Reader Service Card  
 Circle 14 on Reader Service Card  
 Circle 15 on Reader Service Card  
 Circle 16 on Reader Service Card  
 Circle 17 on Reader Service Card  
 Circle 18 on Reader Service Card  
 Circle 19 on Reader Service Card  
 Circle 20 on Reader Service Card  
 Circle 21 on Reader Service Card  
 Circle 22 on Reader Service Card  
 Circle 23 on Reader Service Card  
 Circle 24 on Reader Service Card  
 Circle 25 on Reader Service Card  
 Circle 26 on Reader Service Card  
 Circle 27 on Reader Service Card  
 Circle 28 on Reader Service Card  
 Circle 29 on Reader Service Card  
 Circle 30 on Reader Service Card  
 Circle 31 on Reader Service Card  
 Circle 32 on Reader Service Card  
 Circle 33 on Reader Service Card  
 Circle 34 on Reader Service Card  
 Circle 35 on Reader Service Card  
 Circle 36 on Reader Service Card  
 Circle 37 on Reader Service Card  
 Circle 38 on Reader Service Card  
 Circle 39 on Reader Service Card  
 Circle 40 on Reader Service Card  
 Circle 41 on Reader Service Card  
 Circle 42 on Reader Service Card  
 Circle 43 on Reader Service Card  
 Circle 44 on Reader Service Card  
 Circle 45 on Reader Service Card  
 Circle 46 on Reader Service Card  
 Circle 47 on Reader Service Card  
 Circle 48 on Reader Service Card  
 Circle 49 on Reader Service Card  
 Circle 50 on Reader Service Card  
 Circle 51 on Reader Service Card  
 Circle 52 on Reader Service Card  
 Circle 53 on Reader Service Card  
 Circle 54 on Reader Service Card  
 Circle 55 on Reader Service Card  
 Circle 56 on Reader Service Card  
 Circle 57 on Reader Service Card  
 Circle 58 on Reader Service Card  
 Circle 59 on Reader Service Card  
 Circle 60 on Reader Service Card  
 Circle 61 on Reader Service Card  
 Circle 62 on Reader Service Card  
 Circle 63 on Reader Service Card  
 Circle 64 on Reader Service Card  
 Circle 65 on Reader Service Card  
 Circle 66 on Reader Service Card  
 Circle 67 on Reader Service Card  
 Circle 68 on Reader Service Card  
 Circle 69 on Reader Service Card  
 Circle 70 on Reader Service Card  
 Circle 71 on Reader Service Card  
 Circle 72 on Reader Service Card  
 Circle 73 on Reader Service Card  
 Circle 74 on Reader Service Card  
 Circle 75 on Reader Service Card  
 Circle 76 on Reader Service Card  
 Circle 77 on Reader Service Card  
 Circle 78 on Reader Service Card  
 Circle 79 on Reader Service Card  
 Circle 80 on Reader Service Card  
 Circle 81 on Reader Service Card  
 Circle 82 on Reader Service Card  
 Circle 83 on Reader Service Card  
 Circle 84 on Reader Service Card  
 Circle 85 on Reader Service Card  
 Circle 86 on Reader Service Card  
 Circle 87 on Reader Service Card  
 Circle 88 on Reader Service Card  
 Circle 89 on Reader Service Card  
 Circle 90 on Reader Service Card  
 Circle 91 on Reader Service Card  
 Circle 92 on Reader Service Card  
 Circle 93 on Reader Service Card  
 Circle 94 on Reader Service Card  
 Circle 95 on Reader Service Card  
 Circle 96 on Reader Service Card  
 Circle 97 on Reader Service Card  
 Circle 98 on Reader Service Card  
 Circle 99 on Reader Service Card  
 Circle 100 on Reader Service Card

# Events in the Area

## Democrats breakfast Oct. 26

The Nutley Democratic Club and Nutley Democratic County Committee will host their annual breakfast 9 a.m. Oct. 26 at Armando deVillia Restaurant, Nutley. \$15 per person. "Democrat of the Year" award to be presented. For reservations, call Pat Pugliese at 667-7137.

## Fish and chips at Feusmith

Fewsmith Memorial Presbyterian Church, 444 Union Ave., Belleville, will serve a fish and chips dinner 5:30 to 7 p.m. Oct. 17. \$6 for adults, \$3 for children under 12. Reservations must be made by Oct. 16 by calling the church office at 759-6869, 9 a.m. to noon. No tickets sold at the door.

## Advisory Council meets Oct. 22

The Advisory Council of the Friendly Visitors Program of Belleville, Bloomfield and Nutley will meet 12 noon Oct. 22 at the Community Mental Health building, 570 Belleville Ave., Belleville, second floor meeting room. Call 450-3135 for more information or to place a reservation.

## Organizations for area singles

The ABC (Alone by Choice or Chance) 30 Plus group of the Passaic-Clifton YM-YWHA meets Tuesday evenings at the Y-199 Scoles Ave., Clifton. For more information, call Janet Packer at 779-2980.

New Jersey Moonrakers, a club catering exclusively to tall and single adults, meets 8:30 p.m. every second Tuesday of the month at the Meadowlands Hilton, 2 Harmon Plaza, Secaucus. All ages. \$3 for guests, free for members. 298-0964.

The Singles Connection, widowed, divorced, separated, first and third Thursdays, 8 to 11 p.m., Grace Episcopal Church, 200 Highfield Lane, Nutley. Rap groups, music, dancing. \$3. 235-1177.

Jewish Singles Friday night dance, 20's and 30's. 797-6677.

A New Beginning pub mixer at Allan's Place, 522 Franklin Ave., Nutley, second and fourth Wednesdays after 9 p.m. Lite music, drinks, conversation. 661-3357 or 667-9896.

Singles dance, 7:30 p.m. to 12:30 a.m. Wednesdays. Springburn Manor, 2800 Springfield Ave., Union. Social, ballroom dancing. Orchestra, DJ, big band sound.

Success Oriented Singles (SOS) meets 8:15 p.m. the first and third Fridays of the month. For more information, call 751-1419 or 226-5999.

The Gregory Club of N.J. for 30-plus singles 9 p.m. Oct. 24 at the Nutley Red Cross building, 169 Chestnut St. New and prospective members invited. General meeting and social. For information, call Fred at 942-7831 or Bob at 674-1217.

The O.N.E.S. will meet for lunch 12:30 p.m. Oct. 19 at Bethany Presbyterian Church, corner High Street and West Passaic Ave., Bloomfield. Donation. \$4 or food item of equal value. For mature single, widowed and divorced persons of all religions. For more information, call 667-2640, 777-2153 or 667-5956.

Parents Without Partners, Liberty Chapter, will hold a Halloween fundraiser dance 8 p.m. to midnight Oct. 29 at Hawaiian Palms, 518 Stuyvesant Ave., Lyndhurst. Open to the public. \$5 for members, \$7 for non-members. Awards for best and funniest costumes.

## Sub-Juniors Halloween party

Nutley Sub-Juniors Woman's Club is sponsoring a dress-up Halloween party 7:30 p.m. Oct. 29 at the clubhouse, Chestnut Street between the police station and park entrance. Girls from 12 to 17 invited. Food, games, music. RSVP by Oct. 19 to 661-1082.

## Columbiettes will meet Oct. 22

The Nutley Columbiettes will meet 7:30 p.m. Oct. 22 at Knights of Columbus Council, 190 State St. Tupperware demonstration. Refreshments. Members are urged to bring food or monetary donation for Thanksgiving baskets.

## Smorgasbord supper Oct. 25

Nutley Chapter 121, Order of the Eastern Star, will hold its annual smorgasbord supper Oct. 25 at Nutley Masonic Temple, 175 Chestnut St. For tickets at \$5, call Jean Wagner at 667-2743 or Carol Bell at 935-4275.

## Holiday craft fair Nov. 29

The Nutley Jaycees will host a holiday craft fair at Nutley Savings and Loan, 371 Franklin Ave., 10 a.m. to 5 p.m. Nov. 29. Baked goods, pictures with Santa Claus. For more information or table rental at \$15, call Diane DeKenip at 450-0043.

## Report on Israel at Sisterhood

The Sisterhood of Temple Ner Tamid, 936 Broad St., Bloomfield, will meet 8 p.m. Oct. 20. Marilyn Flanzbaum will present a first hand look at Israel today. Members and friends encouraged to attend.

## Domestic violence discussion

The Essex Chapter of Medical Assistants will host a program on domestic violence 7:45 p.m. Nov. 12 in the doctors' lecture hall at Clara Maass Medical Center, Belleville. For more information on the program or the group, call Joy Hafer at 762-1144.

## E.S.C.A.P.E. meeting weekly

E.S.C.A.P.E., a mutual aid, self-help group for adults who were abused physically or emotionally as children, is holding weekly support group meetings in Bloomfield. Free, confidential and open to all adults. Sponsored by Parents Anonymous. For more information or just to talk, call the Parents Anonymous Hotline at 1-800-843-5437.

## Missionary conference opening

Brookdale Baptist Church, Broad St., Bloomfield, will hold its annual Missionary Conference Oct. 19 through Oct. 26. Theme: "I'll Tell the World." Missionaries will discuss their work in the fields. For more information, call 338-8536.

## Woman's Club luncheon Oct. 23

The Evening Membership Dept. of the Nutley Woman's Club will host a luncheon 11:30 a.m. to 2 p.m. Oct. 23 at the clubhouse, 216 Chestnut St. Tickets are \$3.50.

## Country fair at Montgomery

Montgomery Presbyterian Church, Mill Street and Montgomery Place, Belleville, will hold a country fair 10 a.m. to 4 p.m. Oct. 18. Craft items, Good as New, baked goods, snack bar, children's wishing well.

## Christmas boutique Nov. 8

Orange Life Members Retirees of the Telephone Pioneers will sponsor a boutique 10 a.m. to 4 p.m. Nov. 8 at Park United Methodist Church, 120 Broad St., Bloomfield. Proceeds to needy families. Afghans, baby outfits, Christmas chime critters, satin glass candles, tree ornaments, pastries, etc.

## Dessert, card party Oct. 16

The Lions Auxiliary of the Nutley Lions Club will hold its annual dessert and card party Oct. 16 at the Nutley Elks Club, Chestnut St. Proceeds will benefit the eyesight program. For tickets or information, call Gloria at 667-7089.

## Kid Kats Cafe Talent Show

The Nutley Parks and Recreation Dept. and the Nutley Junior Woman's Club are sponsoring a "Kid Kats Cafe Talent Show" 7:30 p.m. Nov. 14 at Franklin Middle School. Children 3 to 15 may enter in categories of tap, jazz, ballet, lyrical, contemporary and acro-gymnastics. Students can enter more than one category and will be judged against their own age group. For more information, call Marcia Wasvary at 667-2241 or Marie Vichiarello at 667-3731.

## Rose Casale Memorial Dinner

The annual Rose Casale Memorial Dinner will be held 5 p.m. Oct. 26 at Miles A. Suarez Post 711 V.F.W., 369 Broughton Ave., Bloomfield. Roast beef, turkey, elegant desserts. Proceeds to cancer aid and research. For tickets at \$9.50 for adults, \$5 for children, call Marion Hart at 338-8513 or Barbara Ellmer at 338-4256.

## Harvest Masquerade Ball Nov. 8

The Nutley Junior Woman's Club will sponsor a Harvest Masquerade Ball dinner dance 7:30 p.m. to midnight Nov. 8 at the Elks Club Entertainment. For tickets at \$22.50, call Pat Backman at 235-1485 or Mary Ellen Matarazzo at 667-6167.

## Halloween dinner-dance at Elks

The Youth Activities Committee of the Nutley Elks 1290, 242 Chestnut St., will run a Halloween dinner-dance 8 p.m. to 1 a.m. Oct. 25. Costumes optional with awards to the best. Contact Carmine Ucci at 661-2120 or Frank Iberer at 667-7120 for reservations at \$13 per couple.

## Craft Show at Mt. Carmel Oct. 18

Our Lady of Mount Carmel Church, 120 Prospect St., Nutley, will hold its annual craft show 10 a.m. to 4 p.m. Oct. 18. Admission: \$7.50 for adults, \$2.50 for children. Soup and sandwiches available 11 a.m. to 3 p.m.

## Michael Lenson art on exhibit

Michael Lenson painting retrospective 1938 to 1970 will be exhibited in the Ben Shahn Galleries, William Paterson College, Pompton Road, Wayne through Oct. 31. Mon. and Wed. 9 a.m. to 8 p.m.; Tues. Thurs. and Fri. 9 a.m. to 5 p.m.

## 50's/60's dance at St. Val's

St. Valentine's PTA will hold a 50's/60's dance to benefit the school 8 p.m. to 1 a.m. Oct. 25 in the church hall, 236 Hoover Ave., Bloomfield. Tickets at \$15 include hot and cold buffet, D.J., contests and set-ups. Tickets available after Mass Oct. 18 and 19 or by calling Linda at 893-1423 or Becky at 748-0758. No tickets at the door.

## Card party Nov. 7 at Nutley Elks

The ladies auxiliary of the Nutley Elks Lodge 1290 will hold its annual scholarship card party 8 p.m. Nov. 7 at the lodge, 242 Chestnut St. For tickets at \$4, call Terry Oriolo at 904-1002 or Lillian Sisto at 667-4183.

## Craft show/flea market Nov. 8

St. Valentine's School PTA will hold its fifth annual indoor craft show flea market 10 a.m. to 5 p.m. Nov. 8 at St. Valentine's Church Hall, 236 Hoover Ave., Bloomfield. For tables at \$15, call 743-1490 or 398-9076.

## October Sundays at Oakeside

Oct. 19: festival randaide  
Oct. 26: 2 p.m., storyteller. Haunted Inns of Great Britain. Chilling true tales. Limited seating. Free.  
All events at Oakeside Bloomfield Cultural Center, 240 Belleville Ave.

## Knights serving fish and chips

Bloomfield Knights of Columbus will serve fish and chips 6 to 8 p.m. Oct. 31 at 190 State St. Donation: \$5. For information or tickets, call Rose Ruffalo at 743-6668 or Lou Ciarla at 748-5785.

## 50's revival dance at St. Thomas

St. Thomas the Apostle Home & School Association will sponsor a 50's revival dance 8 p.m. to 1 a.m. Oct. 18 in Herron Hall, 50 Byrd Ave., Bloomfield. Tickets are \$12.50 in advance. Call Lorna Scardigno at 338-1681 or Ginny Maulbeck at 338-9817 for tickets and reserved tables.

## Flea market, antiques, crafts

The Nutley Historical Society will hold its 8th annual flea market, antiques and crafts sale 10 a.m. to 5 p.m. Oct. 18 at the Nutley Museum, 65 Church St. Homebaked goods, farm-fresh vegetables, food and refreshments also available. For space reservations, call Ruth at 667-9193 or Audrey at 667-2660 before Oct. 15.

## Masquerade ball dinner dance

Nutley Junior Woman's Club will sponsor a harvest masquerade ball dinner dance 7:30 p.m. to midnight Nov. 8 at the Elks Club, Chestnut St. Full dinner. Beer and soda available through the evening. Magic show, awards for best costume, The Pros disk jockey. For tickets at \$2.50 per person, call Pat Backman at 235-1485 or Mary Ellen Matarazzo at 667-6167.

## Friendly Visitors volunteers Oct. 23

The Friendly Visitors will hold a monthly meeting for volunteers 2 p.m. Oct. 23 at Fewsmith Presbyterian Church, 44 Union Ave., Belleville. Mrs. Jean Goetting, coordinator of Mr. Fikit, will speak. Call 450-3135 for more information.

## Christmas Boutique opens Nov. 8

Sacred Heart Home and School Association will hold its annual Christmas Boutique 10 a.m. to 4 p.m. Nov. 8 at Nardiello Hall, 12 State St., Bloomfield. Handmade crafts, Christmas gifts, baked goods, cake and coffee.

## Card party, dinner at Biase's

Carteret School will hold its annual card party and dinner. "The Year of the Tiger." 6:30 p.m. Nov. 21 at Biase's Restaurant, Newark. For tickets, call Molly Calasanti at 429-7995 or Judy Sterchio at 743-1590. To donate a gift, call Pat Cifelli at 429-0323.

## Oktoberfest smorgasbord Oct. 18

St. Paul's Congregational Church, Franklin Ave. at St. Paul's Place, Nutley, will hold its third annual smorgasbord, an Oktoberfest, Oct. 18. Seating at 5 and 7:30 p.m. Many traditional German dishes. For tickets at \$7.50 for adults, \$3.75 for children under 12, call 667-1321.

## School 3 flea market Oct. 19

The Home and School Association of School 3, 230 Jaramelon St., Belleville, will hold its annual flea market 10 a.m. to 5 p.m. Oct. 19. Set up time 9 a.m. Tables at \$15 may be reserved by calling Pat at 759-6624 or Betty at 759-1114.

## Octoberfest dinner dance Oct. 18

V.F.W. Post 275, 17 Belleville Ave., Belleville, will celebrate an Octoberfest dinner and dance 8 p.m. Oct. 18. Tickets: \$15 per person. Free beer and soda. Live music. For reservations, call 667-7486.

## Chinese auction Oct. 19 at VFW

The Ladies Auxiliary to Stuart F. Edgar Post 493 V.F.W. will hold its annual Chinese auction 2 p.m. Oct. 19 at the post home, 271 Washington Ave. Tickets: \$3 everyone invited. Proceeds to auxiliary cancer fund.

## 'Night at the Races' Oct. 29

Friends of Tom Zampino, a candidate for Congress in the Eighth District, will sponsor a "Night at the Races" 6 p.m. Oct. 29 at the Pegasus Unlimited prime rib dinner. Tickets at \$40 by calling 759-5656. Make checks payable to Friends of Tom Zampino.

## Knights honoring Miller Oct. 25

St. Mary's Council 2346 Knights of Columbus will honor immediate past grand knight George W. Miller with a dinner dance Oct. 25 at council headquarters, 150 Chestnut St. For reservations, call Robert Davies at 667-2661 or Joseph Quigley at 667-6741.

## Flea market at Sacred Heart

An indoor bash outdoor flea market will be held 9:30 a.m. to 4:30 p.m. Nov. 8 at Sacred Heart Parish Hall, Park Ave. and Ridge St., Newark. Table rental at \$12. Free parking, no admission. To benefit Sacred Heart Cathedral. For information, call 484-4600.

## Harvest Festival at Vincent Church

Vincent United Methodist Church, 100 Vincent Place, Nutley, will host its bi-annual Harvest Festival 4 to 9 p.m. Oct. 24. Baked goods sale, full course roast beef dinner at two seatings: 5:30 and 7 p.m. For tickets at \$7.75 for adults, \$4.25 for children under 12, call the church office at 677-5440.

## Family Counsel dinner dance

The Family Counsel Inc. of the Essex County Genetics Center will hold its sixth annual dinner dance 7:30 p.m. Oct. 24 at the Branch Brook Manor, Belleville. Proceeds benefit the 332 patients at the center. Stuffed capon dinner, cash bar. For tickets at \$30, call Erma Mastro at 667-4430 or Irma Kurdyia at 751-1270.

## Oldsmobile Club car show Oct. 19

The Oldsmobile Club of America will host its "Final Fall Fling" car show Oct. 19 at Owens Park, Park Ave., Nutley. Flashy cars and 50's music. Spectator admission at \$1 will benefit the Nutley Public Library. Car registration is \$10 at the gate by noon at the latest. For information, call Steve Karavitis at 368-7815 after 6 p.m.

## Scarpelli Assoc. picnic Oct. 19

The Peter C. Scarpelli Civic Association will hold its second annual picnic beginning at 1 p.m. Oct. 19 at Kingsland Park. \$10 per adult adn \$3 per child includes hot dogs, hamburgers, sausage and peppers, corn, watermelon, beer, soda, games and awards. For tickets, call Peter Scarpelli Sr. at 667-1215 or write the Scarpelli Civic Association, 633 Franklin Ave., Suite 137, Nutley, 07110.

## Cavalcade of Bands competition

The Belleville High School Marching Band will present its third annual Cavalcade of Bands competition 7 p.m. Oct. 17 at Belleville Municipal Stadium. Adults: \$4, students: \$3. Refreshments available. Precision drill teams and marching bands.

## VFW sponsoring Chinese auction

VFW Post 275, 17 Belleville Ave., Belleville, will sponsor a Chinese auction 8 p.m. Oct. 24. Admission: \$3 per person. For tickets or to donate merchandise, call 759-9651.

## Adult education program at temple

The Sisterhood of Temple Ner Tamid, Broad St., Bloomfield, will begin its adult education program 10 a.m. Oct. 22 and meet through Dec. 10. Rabbi Steven Kushner will present a series of classes entitled, "Women and Women's Issues in the Bible." Call the temple for more information.





Phyllis August Mark Cammarato

## August-Cammarato troth announced; July nuptials

Mr. and Mrs. Emanuel August of Belleville announce the engagement of their daughter Phyllis to Mark Cammarato, son of Mrs. Laura Cammarato of Belleville and the late Mr. Anthony Cammarato.

The troth was made known Sept. 14. The wedding will be held July 11, 1987.

Miss August, an alumna of Belleville High School and Anthony Placido's School of Hair Design, is with the Hair Connection.

Mr. Cammarato, also a Belleville High School alumnus, is with JCR Construction.



Jeanne Cifelli — Giovanni D'Andrea

## Jeanne Cifelli engaged to Giovanni D'Andrea

Mr. and Mrs. Gennaro Cifelli of Belleville announce the engagement of their daughter, Jeanne, to Giovanni D'Andrea of Belleville, son of Mr. and Mrs. Antonio D'Andrea of Roccamandoli, Italy.

The troth was made known Sept. 18. The wedding will be held June 27, 1987.

Miss Cifelli, an honors graduate of Belleville High School and The Berkeley School, is a licensed cosmetologist. She is an assistant district manager at Marshall's, Wayne.

Mr. D'Andrea graduated from high school in Italy and is employed as a welder.



Elizabeth Padula — Marco Pacelli

## Elizabeth Ann Padula, Marco Pacelli engaged

Mr. and Mrs. Isadore G. Padula of Belleville announce the engagement of their daughter, Elizabeth Ann, to Marco Pacelli, son of Mr. and Mrs. Frank Pacelli of Wayne.

A engagement party will be hosted by the bride-elect's parents Nov. 2 at the Chandelier.

Belleville. The wedding is planned for May of 1988.

Miss Padula, an alumna of Belleville High School and the Berkeley School of Garret Mountain, is a secretary at ITT.

Mr. Pacelli, a graduate of Wayne Hills High School, is self-employed as Pacelli's Pizzeria, West Paterson.

## Great homemade pizza from the Grand Union

Any way you slice it, there's no better crowd-pleasing meal for children and adults than pizza. And there's no better way to showcase your culinary skills than by serving homemade pizza with fresh ingredients from your local Grand Union supermarket.

The word "pizza" comes from the Italian word for pie. Originally, pizza was made from leftover bread or pastry dough. Today, you can make your pizza completely from scratch or save valuable time by creating your pizza yeast dough crust from frozen bread dough or roll mixes available at your Grand Union store.

To add your own special signature to your pizza, make sure you have a variety of delicious toppings on hand. Your Grand Union supermarket contains an extensive assortment of tempting toppings ingredients, including Prosciutto ham, pepperoni, salami, Italian sausage, tiny meatballs, anchovies, shrimp, capers, green pepper strips, onion rings, garlic slivers, mushrooms, and tuna.

If time permits, you can prepare an eye-catching topping platter and then allow your guests to decorate their own slices. When they've completed this process, all you have to do is sprinkle some olive oil on each pie and bake it for 15 to 20 minutes.

You can cut the pizza into small pieces for appetizers and after-school snacks, or serve the complete pie for dinner parties or late-night suppers. You can also freeze your homemade pizza pies prior to baking them. They should stay fresh for at least a week.

So if you're in the mood for a festive Italian-style treat, the following pizza recipe, developed in Grand Union's own consumer kitchen, may be just right to turn your home into a popular pizza parlor for a night.

As a side dish, you might also serve a delicious tossed salad made from the wholesome greens available in Grand Union's produce department. To top off this special meal, be sure to serve your own homemade basic vinaigrette dressing. Your guests will be green with envy when they spice up their salads with this sensational recipe.

**2-pecks-de-active yeast**

**Pinch sugar**

**3½ cups high gluten bread flour or unbleached white flour**

**1 teaspoon salt**

**¼ cup plus ½ cup olive oil**  
**2 cups tomato sauce**  
**1 to 1½ pounds mozzarella cheese, cut into ½-inch dice**  
**½ cup grated Parmesan cheese**  
**Flour**  
**1. Dissolve yeast with a pinch of sugar in 1½ cup lukewarm water. Let stand for 5 minutes in a warm place until yeast is completely dissolved and bubbly.**  
**2. In a mixing bowl, pour in flour and mix in salt. Make a well in center of flour and pour in yeast and water mixture and ¼ cup olive oil. Mix dough with a spoon, then gather in a rough ball. Place ball of dough on a lightly floured board.**  
**3. Begin to knead dough with the heel of your hand and knead for 15 minutes at least, or until dough is smooth and satiny. Place it in a warm, draft-free place and let rise, uncovered, for 1½ hours or until double in bulk.**  
**4. Preheat oven to 450 degrees.**  
**Punch dough down and knead briefly to get out air bubbles.**  
**5. Divide dough into 4 pieces and roll out each one until about ½ inch thick and about 10 or 12 inches in diameter. With your fingers, push dough along rim, upwards to form a ridge. Transfer dough to baking sheets.**  
**6. Spread about ½ cup of tomato sauce on each pizza, then sprinkle on a quarter of mozzarella cheese and a quarter of Parmesan. Add optional toppings. Drizzle 2 tablespoons of olive oil on each pizza and bake on lowest shelf of oven for 15 to 20 minutes or until cheese is bubbly.**

**Makes four 10 or 12-inch pizzas.**  
**Variations:** Add any or a combination of the following toppings: Prosciutto ham, pepperoni, salami, Italian sausage, tiny meatballs, anchovies, shrimp, capers, green pepper strips, onion rings, garlic slivers, mushrooms or tuna.

**Vinaigrette dressing**  
**4 tablespoons white wine vinegar**  
**1 teaspoon Dijon mustard**  
**¼ cup olive oil or half olive, half vegetable oil**  
**Pinch of salt (to taste)**  
**Freshly ground black pepper**  
**1. Use a jar or plastic container of 1½ to 2 cups capacity with a tight-fitting lid to mix dressing.**  
**2. Combine vinegar and mustard, shaking or stirring until well-blended.**  
**3. Add oil, salt and pepper and shake or stir until well-blended. Makes 1 cup, enough for 8 to 12 servings of green salad.**



**Bound to Bermuda** — Kathy Miller of Belleville is shown poolside aboard the Home Line's new luxury flagship, M.V. Homeric, just before sailing from Manhattan Harbor on a week's holiday cruise to the sunny Bermuda isle.

Enjoy Making Your Own Holiday Gifts

## Cindy's Ceramic Studio

Hours: Mon. Tues. Wed. - 7 p.m.-9:30 p.m.  
 Thurs. - 10 a.m.-1 p.m.  
 Sat. - (no classes) 10 a.m.-1 p.m.

Pleasant and Friendly Atmosphere

FIRST CLASS FREE

classes, greenware, gifts & party favors

759-9208 390 Washington Ave. Belleville 751-4292

BELLEVILLE - KEARNY  
 OBSTETRICS - GYNECOLOGY

HOWARD GRÖDER, M.D.  
 JEFFREY ROSEN, M.D.

HIGH RISK PREGNANCY  
 INFERTILITY

Clara Maass  
 Professional Building  
 5 Franklin Avenue  
 Belleville, N.J. 07109  
 759-0700

Arlington  
 Medical Building  
 837 Kearny Ave.  
 Kearny, N.J. 07032  
 991-1519

"Serving The Community For 40 Years"

## Stork Club

Lauren M. Mosior

A second child, a daughter, Lauren Michelle, was born to Mr. and Mrs. Jim Mosior of Nutley Sept. 11 at Clara Maass Medical Center. Birth weight was 7 pounds, 3 ounces. She joins Kimberly Lynn, 20 months.

Mrs. Mosior is the former Lynn Cornish, daughter of Mr. and Mrs. George Cornish of Belleville. Mr. Mosior, son of Mr. and Mrs. Julius Mosior of

Nutley, is self-employed as Just Pets, Nutley.

**Elaine's  
 Hair Designs**

148 Little St.  
 Belleville, N.J.  
 759-9039

ANNOUNCEMENT

**Dr. Joseph V. LoBiondo**  
 Surgeon Podiatrist

Has assumed the practice of  
 Dr. Joseph Belfatto

for the practice of Podiatric Medicine and Surgery.  
 Comprehensive evaluation and treatment of all foot ailments and injuries.

Facilities for office, hospital and outpatient surgery available  
 BY APPOINTMENT

759-1416

Clara Maass Professional Center  
 5 Franklin Avenue • Suite 106  
 Belleville, New Jersey 07109

## BRANCH BROOK MEDICAL GROUP P.A.

is happy to announce its new director:

**DR. DONATO MARUCCI M.D.**

\* total health care  
 \* family practice \* internal medicine  
 \* emergency care

We accept MEDICARE and most insurances  
 Hours by Appointment -  
 Days and Evenings - Mon-Sat.

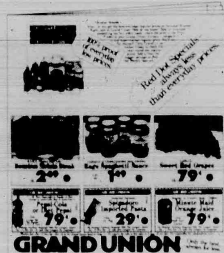
No appointment needed Call: 751-2060  
 for emergencies

Come in for a free blood pressure screening  
 14 Franklin Street, Belleville, N.J. 07109

**Grand Union  
Consumer  
Price Finder**


100% proof  
of everyday  
low prices.

Look for our colorful flyer  
in your newspaper, mail or  
pick up a free copy at  
your local Grand Union.  
Here's just a few of the  
Red Dot Savings you'll find.



U.S.D.A. Choice Beef Loin  
**Boneless Sirloin Steak**  
**249**  
lb.

Crushed, California Tomato Puree (29-oz.)  
or Italian Style  
**Progresso Tomatoes**  
28-oz. Can **69¢**

**Super GRAND UNION Coupon**

Assorted Imported Varieties  
**Spigadoro Pasta**

One 1-lb. Pkg. **29¢**

No Minimum Purchase Required With This Coupon. Good Oct. 12 thru Oct. 18. Limit One Coupon Per Customer.

U.S.D.A. Grade 'A' Fresh  
**Chicken Leg Quarters**  
with Portion of Backs  
**59¢**  
lb.

Creme Sandwich Cookies  
**Nabisco Oreos**  
20-oz. Pkg. **199**

**Super GRAND UNION Coupon**

100% Pure Regular or Country Style - Chilled  
**Minute Maid Orange Juice**

One Half Gal. Cont. **79¢**

No Minimum Purchase Required With This Coupon. Good Oct. 12 thru Oct. 18. Limit One Coupon Per Customer.

Sunshine  
**Hi Ho Crackers**  
12-oz. Pkg. **99¢**

California  
**Sweet Red Grapes**  
lb. **79¢**

**Super GRAND UNION Coupon**

Mt Dew or Regular or Diet Orange or  
Lemon-Lime Slice or Pepsi-Free or  
**Pepsi or Diet Pepsi**

One 2 Liter Btl. **79¢**

No Minimum Purchase Required With This Coupon. Good Oct. 12 thru Oct. 18. Limit One Coupon Per Customer.

**THE BUTCHER BLOCK**

U.S.D.A. Choice Beef Loin  
**Porterhouse or T-Bone Steak**  
lb. **299**

Cry-O-Vac  
**Boneless Whole Fresh Ham**  
lb. **299**  
Boneless-Half Fresh Ham, lb. \$3.29

**Porterhouse** Tailored Steak **329**  
U.S.D.A. Choice Beef Loin or T-Bone lb.

**Club Steak** **299**  
U.S.D.A. Choice Beef Loin, Boneless lb.

**Fresh Brisket** **179**  
U.S.D.A. Choice - Boneless Beef Thick Cut lb.

**Fresh Brisket** **199**  
U.S.D.A. Choice - Boneless Beef Thick Cut lb.

**Beef Liver** **69¢**  
Pre-Sliced - Frozen lb.

**Fresh Duckling** **89¢**  
Concord Farms, Grade A lb.

**Ham Cutlets** Boneless **499**  
Fresh Pork Loin lb.

**Ham Steaks** Boneless **499**  
Fresh Pork Loin lb.

**Ham** **349**  
Plymouth Rock Sausages (Bacon) Boneless lb.

**Corned Beef** **199**  
King's Pride - Round lb.

**Whole Brisket** **127**  
U.S.D.A. Choice - Boneless Beef Fresh Jammed 7 to 15 lbs. Cry-O-Vac lb.

**WHOLESALE SAVINGS**

Fresh  
**Sno White Cauliflower**  
Head **99¢**

**Face Pumpkins** **19¢**  
18 to 22 lbs. lb.

**Delicious Apples** **69¢**  
Red or Golden-Rainbow, 10 to 12 lbs. 10 to 12 lbs. lb.

**Green Beans** **79¢**  
Fresh Tender lb.

**Juicy Lemons** **79¢**  
Fresh Bag of 5 lb.

**Fresh Artichokes** **89¢**  
California - Large Size Each

**Kiwi Fruit** **3 99¢**  
New Zealand 3 For lb.

Fresh Crisp  
**Jonathan Apples**  
5-lb. Bag **159**

**Romaine Lettuce** **69¢**  
Fresh Crisp lb.

**Sweet Yams** **3 99¢**  
New Crop - Golden lb.

**Whole Cranberries** **99¢**  
Ocean Spray 12 oz. Bag lb.

**Cucumbers** **4 99¢**  
Fine Crop - Large Sizing 10 for lb.

**Persimmons** **99¢**  
Fall Exotic Fruits, or Pompanos Each

**Carrots with Tops** **79¢**  
Fresh Tender Bush

**GROCERIES**

Vienna Fingers or  
**Sunshine Hydrox Cookies**  
16-oz. Pkg. **119**

**Concentrated All** **499**  
Sunshine Detergent 17 oz. Pkg.

**Wisk Detergent** **599**  
Heavy Duty Laundry Cleaner 16 oz. Pkg.

**Reynolds Wrap** **129**  
Aluminum Foil 75 ft. Roll

**Dawn for Dishes** **149**  
Fragrant or Scented Liquid Detergent 1 Gallon

**Perrier Water** **79¢**  
Regular - Lemon-Lime or Orange 2.0 oz. Btl.

**Potato Chips** Eagle **99¢**  
Crunchy 10 oz. Pkg.

**Family Pack Savings**

**Chuck for Stew** **199**  
U.S.D.A. Choice - Boneless Beef Cubes 10 lb.

**Chuck Cubed** **219**  
U.S.D.A. Choice - Boneless Beef Steak 10 lb.

**Short Ribs** **197**  
Perdue - Fresh 10 lb.

**Chicken Wings** **69¢**  
Perdue - Fresh 10 lb.

**THE BIG FREEZER**

**Orange Juice** Minute Maid **99¢**  
Reg. Country Style or Reduced Acid 12 oz. Can

**Nibblers** Green **99¢**  
Corn on the Cob 10 oz. Pkg.

**Birds Eye Rices** **115**  
International Style - French, Italian or Spanish 10 oz. Pkg.

**Buitoni Ravioli** **199**  
Round - Cheese - or Spinach & Cheese 10 lb. Pkg.

**Benihana Entrees** **219**  
Assorted Frozen Oriental Varieties 11 oz. Pkg.

**Pancakes** Downyflake **99¢**  
Regular 10 oz. Pkg.

**Tuscan Ice Cream** **239**  
Supreme - Assorted Flavors Half Gal. Cont.

**Klondike Bars** **210**  
Assorted Flavors 30 oz. Pkg.

**DATE-LINE DAIRY**

**Cottage Cheese** **99¢**  
Light or Cream or Seasoned - Small or Large Containers 1 lb. Cont.

**Lemonade** Minute Maid **89¢**  
Reg. or Pink or Fruit Punch or Grapefruit Half Gal. Cont.

**Apple Juice** **99¢**  
Minute Maid - Chilled 64 oz. Cont.

**Yogurt Dannon** **2 100**  
Regular - Assorted Flavors 8 oz. Cont.

**HOME & FAMILY**

**Aim Toothpaste** **139**  
Regular or Mint 5.4 oz. Tube

**Good News Razor** **249**  
Gillette - Disposable Pkg. of 10

**Bufferin Tablets** **299**  
Analgesic Pkg. of 100

**Right Guard Spray** **199**  
Deodorant 3 oz. Cont.

**THE CORNER DELI**

IN STORES WITH SERVICE DELI

**BBQ Chickens** **199**  
Piping Hot - In-Store Prepared 1 lb.

**American Cheese** **149**  
Land O Lakes - White or Yellow 10 lb.

**Hard Salami** **229**  
Hormel - Homestead Brand 10 lb.

**GRAND UNION Coupon**

**20¢ OFF**

With This Coupon And Purchase Of One 40-oz. Can - Assorted Flavors.

**Hi-C Fruit Drink**

Coupon Good Oct. 12 thru Oct. 18. Limit One Coupon Per Customer.

**GRAND UNION Coupon**

Colors, Decorator or Arts & Flowers

**Scottowells Big Roll**

124-Sheet Roll **59¢**

Coupon Good Oct. 12 thru Oct. 18. Limit One Coupon Per Customer.

**GRAND UNION Coupon**

**25¢ OFF**

With This Coupon And Purchase Of One 14-oz. Pkg.

**Post's Honeycomb Cereal**

Coupon Good Oct. 12 thru Oct. 18. Limit One Coupon Per Customer.

354 Main Street, Belleville;  
505 Allwood Rd., Clifton;  
710 Bloomfield Ave., Glen Ridge



**OPEN 24 HOURS**  
MOST GRAND UNIONS ARE  
**OPEN 24 HOURS**  
CHECK YOUR LOCAL GRAND UNION  
WINDOW SIGNS FOR EXACT STORE HOURS

Don't forget...  
Thursday, October 16th is  
WORLD FOOD DAY.

**GRAND UNION**

Not Responsible For Typographical Errors. We Reserve The Right To Limit Quantities For Store Information. Call Toll Free, 1-800-221-1835.  
Prices and Offers Effective Sunday, Oct. 12 thru Saturday, Oct. 18, 1986.



# Belleville Times SPORTS

Mike Lamberti's

## Buc Shots



It's a 21-20 squeaker

## Bucs break the 0-2 ice in win over Montclair

Portraits of victory

(Photos by Michele Suchomel)

Call it the game in which the Belleville Bucs came of age. Last Friday night, Municipal Stadium was the sight as the Bucs defeated the powerful Montclair Mounties 21-20 to earn its first victory of the season after two losses and perhaps finding a foundation on which to build for the remainder of the '86 campaign.

There have been some memorable games played at the Stadium throughout the years. The 1979 Belleville Seton Hall contest was a thriller, with the Bucs winning on a late TD pass from Ed Autisi to Len Mendola. 14-13. There were the great games with Passaic in 1981, '82 and '84. In '81, Belleville lost 7-0 but that didn't take away from the excitement that that game had.

In '82, of course, the Bucs won, 3-2, in that memorable baseball score that was such a defensive struggle. Two years ago, Belleville posted a 7-0 win over Passaic, scoring early on a Mark Walcott to John Oliveri TD pass, then holding on.

There was the 12-7 loss to Union in the Group IV, Section II playoffs of '82, when the Bucs rallied from a 12-0 deficit at halftime to score once and threaten again late in the game. Of course, few fans will forget the 1980 game with Montclair. Belleville came in with an 0-1 record, having been routed by Livingston, 36-12 in its opener, also at Municipal Stadium. Against Montclair, Paul Haverick had a great night running the ball in the steady downpour at BHS and Eugene Cancelliere scored the only Buccaneer touchdown in the first quarter. Belleville won that game, 7-6 and started a nine game winning streak that ended at Giants Stadium on December 7, 1980 against West Essex in the state finals.

Head coach John Senesky said last weekend that the 21-20 victory over Montclair on October 10, 1986, will rank right up there with the 3-2 victory over Passaic and the 14-13 win against Seton Hall. That's pretty lofty company, but if you were at the game, then you know why the coach is so optimistic.

You see, the Bucs had a few opportunities to head "south" so to speak. Belleville, losers of seven straight games dating back to October, 1985, was unable to mount an offense heading into this game.

Over those seven games, Belleville had scored one touchdown, that coming in the opening game of the '86 campaign in a 9-6 loss at Paramus. After losing via shootout to Ridgewood on October 2 at the Stadium, one had to wonder whether the '86 Bucs were any better offensively than the '85 version.

Most of the newspapers in the area said no, and predicted Montclair would win this game somewhere in the area of 28-0.

You can't blame the papers for thinking that. Senesky said: "Based on our two performances this year and Montclair's reputation, you would have to think they would be a big favorite."

The players, however, took exception to the score and during the game, reminded each other of the prediction.

That's probably the best thing that could have happened, said A.D. Jim Silvestri. "That really got the team up."

Belleville scored first, when quarterback Jeff Spillsbury hit Jaime Galioto with a ten yard TD strike. However, Montclair came right back, scoring a TD, but missing the point after conversion that would have tied the game. The teams went into halftime with the Bucs clinging to a 7-6 lead.

Belleville could have folded. It had battled the Mounties tough, but Montclair was bigger, and quicker. So was Passaic in 1982. However, sometimes a word called, "heart" comes into play.

Enter Spillsbury. A 5'7" quarterback trying to throw over defenders 6'1" and bigger, Spillsbury had little success against Ridgewood. Montclair, being even bigger, posed a massive problem for the junior hurler.

The young man, to his credit, didn't quit. He rolled out, more against Montclair. No one ever questioned his throwing arm, he always had an excellent trigger. He found his receivers, namely Galioto, on many occasions. It looked like the old John McIlillo to Ken Constantino hookup that was so successful in 1980.

He passed for 195 yards, he threw three TD passes, two to Galioto. Most importantly, he never stopped.

His performance epitomized the entire Belleville team. The Bucs went ahead, 14-6, but Montclair tied the game with a touchdown and two point conversion. They did it after recovering a Jay Marchese fumble deep in Belleville territory.

Marchese, similar to Frank Fazzini's performance against the Hall in '79, didn't give up. In '79, Fazzini, then a sophomore, had fumbled deep in Belleville territory and Seton Hall promptly recovered and scored the go ahead TD. Fazzini picked his head up and helped fuel the winning Belleville TD drive in the 14-13 win.

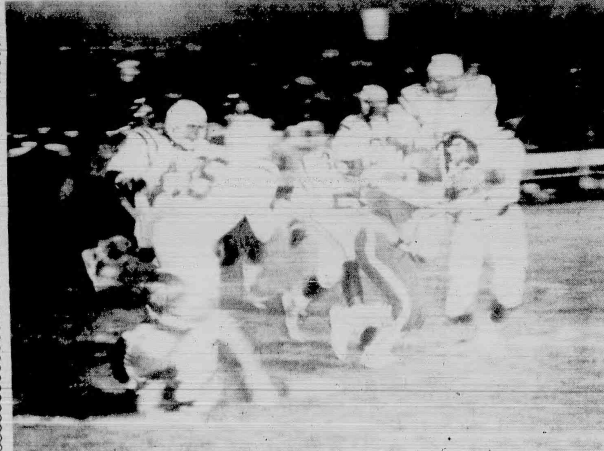
Marchese made a beautiful catch of a Spillsbury pass in the winning drive, bringing both feet down in bounds to insure a first down and the continuation of the drive. One play later, Spillsbury hit Galioto with the winning TD pass and Belleville led, 21-14. Marchese had also made a key interception in the end zone to stall an earlier Mountie drive.

There was one more instance where it all could have gone sour. Seconds after Galioto had scored and while most of the fans and players were still celebrating, someone forgot that Montclair was still playing. After receiving the kickoff, Montclair started on its own 40. On the first play from scrimmage, Mountie running back Pat Frasier took a handoff and ran 60 yards for a TD. It was now 21-20 and Montclair was going for two points.

The Buccaneer defense didn't quit. Led by Gerard Corbo, it stopped the Mounties short of the goal line and preserved the win.

Before the game, someone had asked Galioto if he were ready for a big game. He responded that if the ball came his way, he would be there to catch it.

(continued on page 16)



By Mike Lamberti

If you are a fan of Belleville football and weren't at Municipal Stadium last Friday night, you missed one of the true classics in the storied history of Belleville gridiron. In what can easily be termed an "upset," the Buccaneers defeated Montclair High 21-20 behind a newly found passing game and a true grit determination that is symbolic of the Belleville football player.

For Belleville, now 1-2, the pickings are no easier this Saturday afternoon. Eastside High looms as the next opponent, at Hightel Stadium in Paterson at 1:30 p.m. Eastside, which in the past boasted a less than powerful unit, has found new life this season. The Ghosts are 2-1, with its only loss coming to state power Bergen Catholic in week two by a 27-23 count.

However, let's get back to last Friday night. This game can easily be filed in the "classics" of Belleville football. Head coach John Senesky, a man not known for exaggeration, put this victory in the same category as the Buccaneer wins over Passaic in 1982, 3-2 and Seton Hall in '79, 14-13.

"We would bend, but we didn't break," Senesky said following the win. "Our defense did a great job, our offense was outstanding and the entire team showed its character. We could have folded a few times, especially when they tied the game (14 all in the fourth quarter), but we came back."

There were many heroes in this contest. On offense, how can you overlook the performance of split end Jaime Galioto and quarterback Jeff Spillsbury. Galioto was awarded the game ball for his five receptions and two touchdown catches. It was the finest performance by a Bue receiver since Ken Constantino's heroics in the 1980 season.

Senesky also noted the fine play of Jim Dunphy at defensive safety. Jay Marchese at defensive back, Joe Della Monache at defensive back, Vincent Vollero, Gerard Corbo, Dave McNeil and Andre Graham on the defensive line, John Magi at linebacker and the fine offensive line play of Gerard Tucci, Steve Reilly and Pat Kimball.

It was also Belleville's first win over the Mounties since the 1980 team posted a 7-6 victory at Municipal Stadium, also on a Friday night) during a driving rain storm.

This time it was a clear, chilly Friday night at the Stadium, but the results were still a one point victory over the Mounties.

Montclair won the toss and moved from its 22 to mid field, before the Bue defense stiffened and forced a punt. The Bucs started on its 37 and began a drive that would cover 63 yards on 10 plays.

Dunphy started it with a one yard run. Spillsbury then established a passing game with a 21 yard strike to Galioto for a first down at the Mountie 41. After two pass incompletions, fullback John View broke through for an 11 yard gain on third down, giving the Bucs four new downs at the Mountie 30.

Dunphy and Lou Lucente gained short yardage from the 30, setting up a third and seven at the 26. Spillsbury went to the air waves again and found his favorite target, Galioto, for 15 yards to the Mountie 11. After a one yard gain by View, Spillsbury finished the impressive drive with a 10 yard strike to Galioto in the end zone. The point after conversion by McNeil good, the Bucs led, 7-0.

Montclair scored in the second quarter when quarterback Frank Cuzzo found Scott Egan in the end zone for a ten yard score. However, the Mounties

(continued on page 14)

# Bucs break the 0-2 ice

(continued from page 13)

were fouled on the point after kick when the Buc front line came through to block the kick. The half ended with Belleville up 7-6.

We've faced three good quarterbacks in three games," Senesky said. "This is the year of the quarterback in this league. I have to admit that we've done pretty well against the passers so far."

True. The Mounties, noted for a strong passing game, were much stronger on the run than in the passing game. Montclair was paced on the ground by backs Pat Frasier and Erwin Sampson.

In the third quarter, Belleville took the kickoff and started business on its 20. After losing five yards on a muffed running play, the Bucs lit the airwaves again as Spilsbury threw a long bomb to Galioto, who hauled in the pass with a diving effort at the Buc 48.

The play gave Belleville new life, and the Bucs drove into Mountie territory on the next play as Spilsbury hit Al Best for 20 yards and a first down at the Mountie 32. The next two plays netted just four yards and on third down, Spilsbury came through again, this time hitting Jay Marchese with a 16 yard strike to the Mountie 12. After Murphy gained a yard, Spilsbury finished the job with an 11 yard pass to Marchese for the juniors first touchdown of the season. The score boosted the Buc lead to 14-6 following Mc Neil's conversion.

The Buccaneer defense held its own on the next series, but Montclair regained possession when Sampson intercepted Spilsbury, setting up a serious Mountie drive. Montclair drove from the Buc 40 to the six yard line, when Marchese made a key play. On a Cuozzo pass into the end zone, the junior made an acrobatic interception, thwarting the drive and giving the Bucs the ball at the 20.

After Frank Montagna gained three yards, Marchese fumbled after an 11 yard gain and Montclair was back in business at the Buc 35. This time, the Mounties were not to be denied as Cuozzo led the team down field in eight plays, highlighted by a one yard scoring run by Sampson.

The Mounties went for two and were successful, tying the game at 14 in the fourth quarter. It was now time to see what the Bucs were made of.

The Bucs drove from its 20 to the 41, but were forced to punt on fourth down. Galioto, the team punter, got off a good kick, but he was roughed on the play and Belleville got new life at the Mountie 44. On third down, Spilsbury hit Marchese with a 12 yard strike on the sideline. Marchese, who was down after his fumble led to a Montclair score, did a beautiful job of keeping both feet in bounds on the catch.

After a run netted no yards, Spilsbury did it again, hitting Galioto, who had broken through the Mountie secondary, for a 32 yard score. Mc Neil added the key conversion and the fans and players began to celebrate a 21-14 win.

However, the celebration turned to dead silence 30 later when Frasier took a handoff and ran practically untouched for a 60 yard score. Suddenly, it was 21-20, with 3:06 left in the game and the Mounties were going for two points, hoping to take the lead.

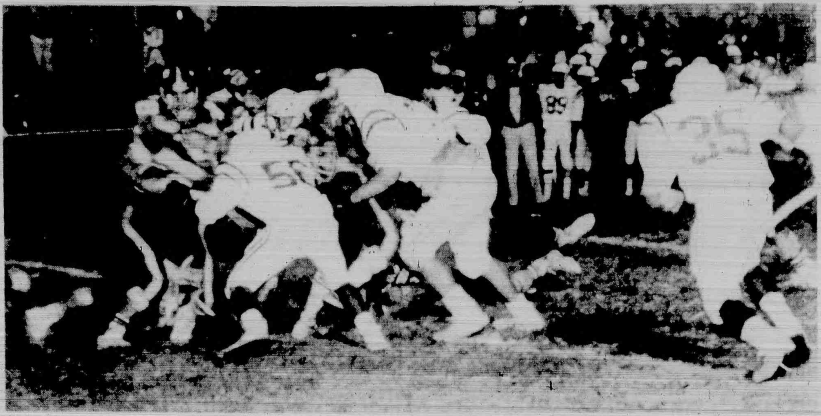
It didn't come to pass, however. Belleville's defense anticipated the play, stopping the Mountie runner on the two yard line and holding to a 21-20 lead.

The game ended at that score and the fans who turned out for the game went home with plenty of happy memories.

What I was really happy about, Senesky said, was that Montclair didn't give us any breaks. We had to earn all three scores. Our kids earned this one. It was a big victory.

As for Eastside, Senesky is expecting another tough battle. "They beat Passaic last Saturday, 7-6. They've won two of three and almost beat Bergen Catholic. Eastside is a very physical team, they have speed and size. This isn't like previous seasons, where they were an easy win. This will be a very tough game."

NOTES: Bucs have beaten Eastside in last three meetings, winning in 1982, 30-0, 84, 26-0 and last season, 12-0. The win over Montclair snapped a seven game Buc losing streak, dating back to the fourth game of last season.



Bellevillite's sports is bird racing

## Inspector Fornoratto's all 'cooped up'

By Christopher Bifani

When Belleville Building Inspector Joe Fornoratto isn't out ticketing construction code violators, chances are he's cooped up in his backyard, tending to his garage top swarm of pedigree racing pigeons.

"It's a hobby, a good American sport," Fornoratto said of his favorite leisure activity. "It's something more young people should get involved in."

Fornoratto got involved in it when he was a youngster, "I was back in the 40's."

"I've been into it since I was a teenager. My older brother had them years ago when we lived in Silver Lake. Then, after I got married about 35 years ago, he gave

them up while I started raising my own."

Fornoratto belongs to an Essex-based pigeon racing club, known as the Orange Valley Homing Pigeon Club in Orange. The club organizes homing pigeon races and also competes collectively in races organized by other clubs.

Fornoratto explained that the races are conducted in an interesting unusual way. First, all the birds must be tagged. Then the birds — sometimes thousands of them — are transported by a large truck to a site 200 miles in the west. Fornoratto's birds, and those of his fellow club members, are trained to race only from the west to the east. He said that other clubs race birds from north to south, but no bird can be trained

to race both ways.

The first bird to arrive back at the home coop wins, but birds are handicapped to offset distance differences between pigeon enthusiasts' home coops.

And how do the pigeon racing officials determine for sure when a pigeon arrives back at a pigeon fancier's home?

"We use a sealed time clock," Fornoratto replied. "He explains that the tag must be removed from the bird after it descends, placed into a capsule which is then stamped by the clock with the time of arrival. Prior to this, the clock is sealed."

Although money is included along with the trophies and prestige of a win, Fornoratto says it's not really enough to amount to anything.

"I make my expenses for the month I'm happy," he said. "And what are the expenses?"

Entry fees of about \$2.50 per bird — he usually raises about half a dozen \$15 per year in club dues, buying the birds at a cost of about \$5 — \$10 each, although birds born of proven winners on both sides can sometimes fetch up to a \$1000.

"I'll pay up to \$30 if I go to a pigeon auction and see that a pigeon comes from a family of winners," Fornoratto said modestly. "Although that won't buy him the direct offspring of proven winners it can get him a 'nice or nice'."

The biggest expense, however, is feed. This runs him about \$300 a year. He feeds his birds — dozens of them including racers, breeders and old timers — grain, barley, corn, hemp, green peas, and sometimes a little parakeet food for sweetener.

All in all, it's not too expensive, which is why it's often referred to as the poor man's horseracing.

And how often do his birds win a race?

Not too often, Fornoratto concedes, however he has won his fair share, including a recent top east coast race.

"The last race I won," Fornoratto proudly told the Times,

beat the best guys in the area. He explained that the best guys are the ones who are in the business — they breed, buy and sell pigeons, and race dozens of birds at every race. Thus, when one of Fornoratto's few entries comes in first he has beaten the odds, making the victory that much more sweet.

Racing pigeons fly very fast. Over long distances the bird routinely averages more than 50 miles per hour. Fornoratto said the fastest time ever is around 19 MPH, and the fastest time ever clocked by one of his birds is over 52 MPH.

Joe Fornoratto has some interesting anecdotes about his hobby.

There was the time a raccoon got into the coop.

"He killed about 7 pigeons before a cop came and shot him," the building inspector said.

Then there was the time a cat got in and began killing the pigeons.

"When I came in, the cat attacked me — went right at my face. I had to kill him," Fornoratto said. Three other times cats got in, but were let out without incident.

Whenever Fornoratto sends his birds on a race, there's always the chance some won't make it back to his Union Avenue coop.

"Sometimes the hawks get them. Other times hunters shoot them down along the way," he said.

Inspector Fornoratto concluded his interview with a pitch for "young people to get involved."

He encouraged Bellevillites — young and old — to seek more information on racing pigeons to call the Orange Valley Home Pigeon Club Secretary, Gilbert Hunsinger at 743-3865.

And if you want to talk to Fornoratto directly about the sport, you won't be ruffling his feathers if you call him at home. His number is 759-1492.



Feathered friends — Some of Joe Fornoratto's prized pigeons. Actually, these aren't the birds he races, but the birds he uses to guide his racing pigeons back to his Union Avenue coop. (Photo by Christopher Bifani)

## Winless cross-country Buccaneers drop two more meets to Passaic and Wesssex

The Belleville cross country team dropped two more close

meets, losing to Passaic and West Essex last week. The Bucs, despite an 0-6 mark, have lost three tough meets to good clubs and are hoping to add a few notches to the victory column before the end of the dual meet season.

Belleville raced its arch rival

201-759-9950 Licensed Dealer

**BULLET HOLE**

Colts • Rem-Modeling • Moving • Transporter

Collector Guns Buy • Sell • Trade

338 Washington Ave. Belleville, N.J. 07001

**7 WAYS TO REDUCE YOUR AUTO INSURANCE COST!**

Stop in with your auto insurance policy and let us show you how! Our computer is programmed to search for the best coverage at the lowest cost to suit your needs.

HERE TODAY... HERE TOMORROW serving the area since 1952

**HARVEY KRAMER AGENCY INC.**

INSURANCE

475 Washington Avenue, Belleville 201-751-1266

Nutley last Tuesday. This afternoon, the team is at Kennedy and next Tuesday, Belleville will compete in the NNJL meet, at Garrett Mountain, starting at 4 p.m.

Belleville lost to Passaic, 27-30 and West Essex, 22-35 last week. The Passaic match, along with earlier meets with Clifton and Bloomfield, were close races that could have gone either way. Craig Burden won the race with Passaic, in a time of 16:18 on the 2.9 mile Passaic course. Greg Moriello was third in 16:33 and John Zurlo placed fifth with a time of 16:58. Bob Scheible was the next Buc across, in tenth place overall, with a time of 18:30. John Morrell closed the scoring with an 11th place finish and time of 18:50.

For the girls, Joyce Luongo

was second in a time of 20:56. The West Essex race saw another good performance from Burden. The senior finished third overall, with a time of 17:32. Moriello, who has been running very well, was fourth in a time of 17:48. Zurlo placed seventh in 18:23. Scheible was tenth in 20:10, and Morrell finished right behind in a time of 20:24.

Luongo won the girls race in a good time of 23:11. Gina Guarino was third in 29:20 and Diane Di Vincenzo finished fourth in 29:47.

In the Essex Catholic Invitational, run last Saturday at Branch Brook Park, Burden finished in a time of 17:31. Moriello's time was 18:00. Zurlo came in at 18:07 and Scheible clocked in with a time of 19:38. Luongo's time was 23:01 on the girls course.

The team has been hampered by injuries. David Rosamilia has been sick and missed last week's action. Scheible has a leg injury and was questionable for the Nutley race. Donna Lee Daudelin has been sick and was also listed as questionable for Nutley.

## Junior Bucs streak to 3-0

The Belleville Recreation "Junior Bucs" Midget Football team improved to 3-0 as they defeated Nutley in their home opener 12-6 last week. The Midget squad presently stands atop the league standings and will look to extend their winning streak in upcoming games against Clifton, Nutley and Bloomfield.

The Belleville JV squad, meanwhile, lost another hard-fought 6-0 decision, this time to North Bergen at home. North Bergen's manager, a 6-0 win over the Belleville Varsity Junior Bucs. Belleville's Varsity team is now 1-1

while the JV team stands at 0-2.

### Touch Football

The 1986 Belleville Recreation Touch Football season kicked off last week as Jerry Turi scored 4 touchdowns and Davey Watson three for another in leading the Jets to their 35-0 defeat of the Giants. Eric Zorpy, Robert Dena, Brian Dena and John Perna all scored extra points. In the other game, the Cowboys rallied from behind and scored the game winning touchdown as time expired to edge the Chiefs 14-13.

**TIRE**

**END OF SUMMER TIRE SALE**

sale ends Nov. 15, 1986

Featuring **FREE** Replacement Warranty for Road Hazard

Ask Rick & Lindy for details

**ALL SEASON RADIALS**

Low prices on All-Season

	List	SALE PRICE
155R13	\$49.95	\$29.95
195 75R14	66.00	46.80
205 75R14	67.50	49.45
205 75R15	68.00	49.95

All other sizes included in sale

**FREE BRAKE SYSTEM SAFETY CHECK**

Shocks & Steering Suspension Check with every purchase

"mounting and balancing extra"

**R & L HILLTOP AMERICAN**

69 Union Ave. Belleville (corner of Union & Williams St.)

751-5294 759-9670



## FALL SCHEDULES

### 1986 Junior Bucs Football Schedule

Belleville Recreation Department  
Phil Kinfante, League Director

#### MIDGET DIVISION

Date	Opponent	Time	Location
Oct. 19	A Nutley	1 p.m.	Park Oval
Oct. 25	H Bloomfield	5:30	Stadium
Nov. 1	H Kearny	5:30	Stadium
Nov. 16	A Nutley	1 p.m.	Clifton JHS
Nov. 21	H Kearny	7 p.m.	Stadium

Each team in the Midget Division plays all opponents twice.

#### VARSITY JV SCHEDULE

Date	Opponent	Time	Location
Oct. 19	A Nutley	JV 2:00 Vars. 3:30	Park Oval
Oct. 25	H West NY	JV 6:30 Vars. 8:00	Stadium
Nov. 1	H Kearny	JV 6:30 Vars. 8:00	Stadium
Nov. 7	JV Consol (6 vs 7)	6:00	TBA
Nov. 8	A Vars. playoffs	6:00	Kearny
Nov. 9	A JV playoffs	1:00	Clifton
Nov. 14	A JV consol. (winner 7-6 vs 5)	6:00	Nutley
	Vars. consol. (winner 7-6 vs 5)	7:30	Nutley
Nov. 15	A Vars & JV Championship	7:00	MSC

Each team plays all opponents once during the regular season.

#### BHS Gymnastics

Oct. 17	Montclair	H	6:30 p.m.
Oct. 21	Clifton	H	4 p.m.
Oct. 23	Neuman Prep	A	4 p.m.
Oct. 28	Verona	H	4 p.m.
Oct. 31	League Meet		
Nov. 6	Kearny	H	4 p.m.

#### BHS Football

Oct. 18	Paterson Eastside	A	1:30 p.m.
Oct. 24	Bloomfield	H	7:30 p.m.
Nov. 1	Passaic	H	2 p.m.
Nov. 8	Clifton	A	1:30 p.m.
Nov. 15	Paterson Kennedy	A	1:30 p.m.
Nov. 27	Nutley	H	11 a.m.

#### BHS Soccer

Oct. 15	Paterson Eastside	A	4 p.m.
Oct. 17	Montclair	H	4 p.m.
Oct. 20	Passaic	A	4 p.m.
Oct. 22	Paramus Catholic	H	4 p.m.
Oct. 24	Nutley	H	4 p.m.
Oct. 27	Paterson Kennedy	A	4 p.m.
Oct. 29	Hackensack	H	4 p.m.

#### BHS Cross Country

Oct. 16	Paterson Kennedy	A	4 p.m.
Oct. 21	NNJ Meet	A	

#### BHS Volleyball

Oct. 15	Bloomfield	H	4 p.m.
Oct. 20	Paterson Eastside	H	4 p.m.
Oct. 21	Immac. Heart	A	4 p.m.
Oct. 22	Montclair	H	4 p.m.
Oct. 23	Neuman Prep	H	4 p.m.
Oct. 24	Passaic	A	4 p.m.
Oct. 27	Paramus Catholic	H	4 p.m.
Oct. 28	Benedictine	A	4 p.m.
Oct. 29	Nutley	H	4 p.m.
Oct. 30	Neumann Prep	H	4 p.m.
Oct. 31	Paterson Kennedy	A	4 p.m.
Nov. 3	Hackensack	H	4 p.m.
Nov. 4	Good Council	H	4 p.m.

#### BHS Girls Tennis

Oct. 16	Clifton	A	4 p.m.
Oct. 21	Bloomfield	H	4 p.m.
Oct. 23	Paterson Eastside	A	4 p.m.
Oct. 28	Montclair	H	4 p.m.
Oct. 30	Passaic	A	4 p.m.
Nov. 3	Nutley	H	4 p.m.
Nov. 5	Paterson Kennedy	A	4 p.m.
Nov. 8	St. Peter's	H	11 a.m.

Junior varsity schedule is the same.

### ONE TIME INTRODUCTORY OFFER

Tanning - Wolff System  
8 Sessions - \$32.00  
12 Sessions - \$48.00  
3 Months - \$99.00  
Full Body Massage - 1 hr. \$25.00

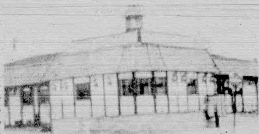
**HALLOWEEN  
MAKE UP & HAIR STYLES**

FULL SERVICE SALON

**Studio One**  
Hair Design

1095 Broad St. Bloomfield • 338-9777

### The Choice of the People



7 Days  
24 Hours  
Delicious  
Salad Bar!  
Italian  
Specialties!  
Steaks & Chops

All baking done on premises • Homemade pastries  
Children's Menu Available  
Special Breakfast Menu 4:31 a.m.  
Daily Breakfast Lunch 11 a.m. - 3 p.m. Salad Bar Open 11 a.m. - 10 p.m.  
ALCOHOL AND COMPLETE DINER MENU

We're Always Open

**WILLIE'S**  
DINER-RESTAURANT

9 State St. Bloomfield Call 748-7414



### HISTORIC FARMHOUSE COLONIAL

Perennial Favorite, this Historic Glen Ridge home has been carefully restored, tastefully decorated and is now in condition. Situated on over 1/2 acre this home boasts 4 bedrooms, 2 baths, plus powder room, family room, office, living room with working fireplace, an eat-in kitchen and many other features. Won't last at \$315,000.

**SCHULTZ  
REAL ESTATE**  
50 Church St.  
Montclair, N.J. 07042  
783-5050

Member, Equal Housing Opportunity, National Association of Realtors, New Jersey State Board of Realtors, National Multiple Listing Service, Inc.



## Crown Chevrolet DRIVES DOWN THE COST OF BUYING!

Lease a Brand New '87 Chevrolet from Crown today and discover how little it costs to drive the car you've always wanted!!

Model	Monthly Payment	Total of Payments
<b>CHEVETTES!</b> 1.8L 4-cyl. 4 spd. man. trans. steering & brakes. List \$5285	<b>\$91</b>	<b>\$4368</b>
<b>SPRINTS!</b> 2 dr. hatchback w. std. 1.1 3-cyl. engine. 5 spd. man. trans. 8447 man. steer. pwr. disc brakes. List \$5185	<b>\$95</b>	<b>\$4752</b>
<b>SPECTRUMS!</b> 2 dr. w. std. 1.5L 4-cyl. eng. 5 spd. man. trans. front wheel drive. List \$7999	<b>\$125</b>	<b>\$6000</b>
<b>NOVAS!</b> 4 dr. w. std. 1.5L 4-cyl. eng. 5 spd. man. trans. 8447 man. steer. pwr. disc brakes. List \$5548	<b>\$135</b>	<b>\$6480</b>
<b>CELEBRITYS!</b> 2 dr. coupe w. std. 2.5L 4-cyl. eng. 5 spd. man. trans. pwr. steering & brakes. List \$10,409	<b>\$159</b>	<b>\$7632</b>
<b>CAPRICES!</b> 4 dr. w. std. 4.3L V6 auto trans. pwr. steer & brakes. List \$11,687	<b>\$278</b>	<b>\$8544</b>
<b>SUBURBANS!</b> C-10 w. std. V8 auto trans. man. steer. pwr. brakes. List \$12,983	<b>\$191</b>	<b>\$9168</b>
<b>CORVETTES!</b> 2 dr. sport coupe w. std. V8 auto od trans. pwr. steering & brakes. List \$28,474	<b>\$390</b>	<b>\$18,720</b>
<b>PICK-UPS!</b> S-10 w. std. 4-cyl. 4 spd. man. trans. man. steering & brakes. List \$5890	<b>\$138</b>	<b>\$6624</b>
<b>VANS!</b> Full size w. std. 4.3L V6 3 spd. man. trans. man. steering & brakes. List \$9989	<b>\$153</b>	<b>\$7296</b>
<b>BLAZERS!</b> S-10 w. std. 4-cyl. 4 spd. man. trans. man. steer & brakes. List \$10,464	<b>\$165</b>	<b>\$7920</b>

### SUBURBAN TRADED CARS

<b>'85 CAVALIER</b> CHEVY, 4 dr. ind. 4-cyl. auto trans. pwr. steering & brakes, air cond., r. defrost, stereo. 18,708 miles. Stock No. 30549 <b>\$6588</b>	<b>'84 LE BARON</b> Chrysler, lt. brown, 4 door, 4-cyl. auto trans. pwr. steering & brakes, AC, rear defrost, stereo. 21,833 mi. New! 18,708 miles. Stock No. 30549 <b>\$6988</b>	<b>'83 CENTURY</b> Buick, 2 tone, 4 door, 6-cyl. auto trans. pwr. steering & brakes, AC, rear defrost, stereo. 52,631 mi. Stock No. 29068 Excellent! <b>\$7988</b>	<b>'82 CITATION</b> CHEVY, 4 dr. hatchback, 6-cyl. auto trans. pwr. steering & brakes, air cond., r. defrost, stereo. 40,858 mi. <b>\$9388</b>
<b>'85 CUTLASS</b> OLDS, 4 dr. V6 auto trans. pwr. steering & brakes, air cond., r. defrost, stereo. 18,708 miles. Stock No. 30549 <b>\$8088</b>	<b>'84 IMPALA</b> CHEVY, 4 dr. 4-cyl. auto trans. pwr. steering & brakes, air cond., r. defrost, stereo, cassette, 22,118 miles. A real beauty! <b>\$7988</b>	<b>'83 CENTURY</b> BUICK, 2 tone, 4 dr. 6-cyl. auto trans. pwr. steering & brakes, air cond., r. defrost, stereo. 52,631 mi. Stock No. 29068 Excellent! <b>\$7988</b>	<b>'82 GRAND PRIX</b> PONTIAC, 2 dr. ind. stereo, air cond., r. defrost, pwr. steering & brakes, auto trans. 56,222 mi. <b>\$9888</b>
<b>'84 LE BARON</b> CHRYSLER, lt. brown 4 dr. 4-cyl. auto trans. pwr. steering & brakes, air cond., r. defrost, stereo. 21,833 mi. <b>\$6988</b>	<b>'84 WAGON</b> CHEVY Celebrity, black, roof rack, 6-cyl. auto trans. pwr. steering & brakes, air cond., r. defrost, stereo. 17,923 mi. Showroom new! <b>\$7588</b>	<b>'82 BONNEVILLE</b> PONTIAC, 4 dr. 6-cyl. auto trans. pwr. steering & brakes, air cond., r. defrost, stereo. 52,612 mi. Stock No. 2051P. Flawless cond! <b>\$6488</b>	<b>'81 WAGON</b> Ford Escort, blue, 4-cyl. 4 spd. man. trans. pwr. steering & brakes, AC, rear defrost, AM-FM, 60,216 mi. Must See! <b>\$2588</b>

**OVER  
150  
CARS &  
TRUCKS  
TO CHOOSE  
FROM!**

**100%  
FINANCING**

Qualified buyers can buy with no money down and up to 48 mos. to pay. All arrangements made on premises in minutes!

**LEASE  
OR BUY**

Advised payments are for 48 mo. closed end leases. Vehicles are not in stock. Allow 6-8 wks. delivery.

Prices exclude tax & NY fees

**'86  
DEMOS &  
LEFTOVERS**

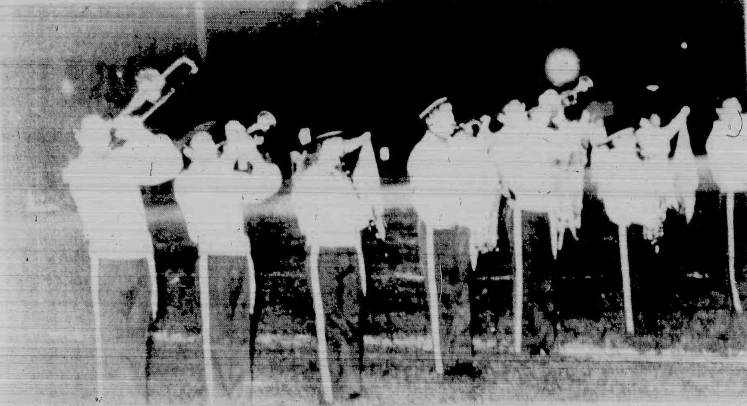
**Crown Chevrolet**  
New Jersey's Chevrolet Underpricer  
514 Washington Avenue, Belleville (201) 759-4200

**GM QUALITY  
SERVICE PARTS** GM

Mr. Goodwrench

# gymnastic team sets record 10-1

The Belleville High School gymnastic team set a new record of 10-1 in its first season. The team, coached by Coach [Name], has been undefeated since its first match against [Team Name] on [Date]. The team's success is attributed to the hard work and dedication of its members, who have been practicing for several months. The team's record is a testament to their skill and teamwork.



They play on — A portion of the Belleville High School brass band plays for the team and the crowd at a recent Belleville High School football game. (Photo by Chris Lawlor)

## Belleville Buccaneer soccer squad 4-2-2 is in upper echelon of league

Chris Lawlor  
The Belleville soccer team has a lot to be proud of. They are currently in the upper echelon of the league, thanks to their 4-2-2 formation. The team has been playing well, and their defense is particularly strong.

The Buccaneers emerged as a team of their own, and they are currently in the upper echelon of the league. They have a strong defense, and their offense is also quite effective. The team's success is a result of their hard work and dedication.

Coach Tony DeAquino is proud of his team's performance. He believes that the team's success is due to their hard work and dedication. He expects them to continue to perform well in the future.

Keith Woods is a key player for the team. He has scored several goals, and he is a major threat to the opposition. Woods is a versatile player, and he can play in several positions.

Roger is the last man back on defense. He is a strong player, and he is a major threat to the opposition. Roger is a versatile player, and he can play in several positions.

Chris Goldrick is a key player for the team. He has scored several goals, and he is a major threat to the opposition. Goldrick is a versatile player, and he can play in several positions.

The Buccaneers are a strong team, and they are currently in the upper echelon of the league. They have a strong defense, and their offense is also quite effective. The team's success is a result of their hard work and dedication.

The Buccaneers are a strong team, and they are currently in the upper echelon of the league. They have a strong defense, and their offense is also quite effective. The team's success is a result of their hard work and dedication.

The Buccaneers are a strong team, and they are currently in the upper echelon of the league. They have a strong defense, and their offense is also quite effective. The team's success is a result of their hard work and dedication.

The Buccaneers are a strong team, and they are currently in the upper echelon of the league. They have a strong defense, and their offense is also quite effective. The team's success is a result of their hard work and dedication.



Key booter — Center midfielder Keith Woods has been instrumental this season in BHS soccer meets. In last week's 3-0 victory over Kennedy High School, Woods contributed a goal and an assist. (Photo by Chris Lawlor)

### THE NEW ANGELO'S RESTAURANT & PIZZERIA

300 Broad St. Bloomfield • 429-8505

Open For Lunch  
from 11 A.M.

Large banquet room is open for all occasions up to 80 people. Also serving in trucks w/ heated ovens. Offering accommodations on & off premises.

BUY 1 DINNER  
GET 1 FREE  
GET 2.00 OFF  
ON SECOND DINNER  
EQUIVALENT PRICE  
Offer good any day. Expires 10-31-89.

1.00 OFF  
ANY  
LARGE PIZZA  
Offer good any day. Expires 10-31-89.

Offer good any day. Expires 10-31-89.

**Paul A. Caputo D.P.M.**  
General and Surgical Care of the Foot  
is pleased to announce  
Day - Evening - and Saturday Hours  
345 Washington Avenue  
Belleville, N.J. 07109 • 759-6560

## FOR SALE

FIRST TIME OFFERED  
BLOOMFIELD  
2-FAMILY DUPLEX

Each side has six rooms, separate heating units, looks like two 1 family homes. Priced at \$220,000. Info call

**MARGIE McDONALD**  
Realtor  
316 Broad St., Bloomfield  
429-7372

### IMPORTANT NOTICE PLEASE READ CAREFULLY HOMEOWNERS CUT HIGH FUEL BILLS!! GAS OR OIL HEAT SYSTEMS

IF YOUR TOTAL FAMILY INCOME IS  
UNDER \$35,000  
YOU MAY QUALIFY FOR ONE OF OUR

### FUNDING AVAILABLE WITH EASY CREDIT APPROVAL

ENERGY ASSISTANCE PROGRAMS

- SAVE UP TO 30% YEARLY ON FUEL BILLS
- 20 YEAR MANUFACTURER WARRANTY
- STATE APPROVED
- SERVICE 24 HOURS
- PRE-PAID FUEL ROLLS FROM PREMISES
- INSTALLATION ACCORDING TO CITY CODE
- FULLY APPROVED
- OVER 20 YEARS EXPERIENCE



ONE WEEK  
SPECIAL  
**FREE**  
DAY & NIGHT  
THERMOSTAT  
WITH EVERY INSTALLATION  
HURRY LIMITED  
OFFER

### ENERGY RESOURCES CENTER

CALL FOR  
FREE ESTIMATE  
**429-0555**

160 ORANGE ST., BLOOMFIELD







# Thousands line streets of Nutley, Belleville



The Fiorenze Society exemplifies the spirit of inter-township cooperation that spurred the parade four years ago. In this year's parade 40 groups marched from Belleville to Nutley, this year's host town. (All photos by Kara Laczynski except where noted.)

Officials from both townships led the procession, which began at 1 p.m. Sunday. Pictured in the foreground are Nutley Commissioner of Revenue and Finance Jerry Amiano (l), Nutley Commissioner of Public Works Peter Scarpelli, and Belleville Mayor Michael Marotti.



Representatives of many nationalities joined in the traditionally Italian-American celebration of Columbus Day.

Columbus Day revelers of all ages served as both marchers and spectators of the parade.



What would a parade be without politicians? Here Republican candidates for Essex County Executive and Surrogate, Nicholas Amato and Earl Harris, greet supporters.



This young woman led the award-winning Orange High School band, one of several from neighboring communities.



Though not present in body, Essex County Executive Peter Shapiro was at the parade in spirit, distributing hundreds of blue balloons bearing his name through campaign workers. Here Jonathan and Christopher King of Marlboro Maryland, who are visiting their grandparents in Nutley, receive balloons.



Nutley Little Theatre members not only "got in the act" of marching — some members came dressed as clowns, courtiers, and witches.



A truckful of young parade-goers from Holy Family Day Nursery School, which serves children in both towns, travelled down Fanklin Avenue, lined in purple for the occasion.



# to view fourth annual Columbus Day Parade



Young sportsmen barrel down the avenue, banner in hand.



Isabella and Ferdinand turned up to honor their explorer, Columbus. (Photo by Jaye Tarantino)



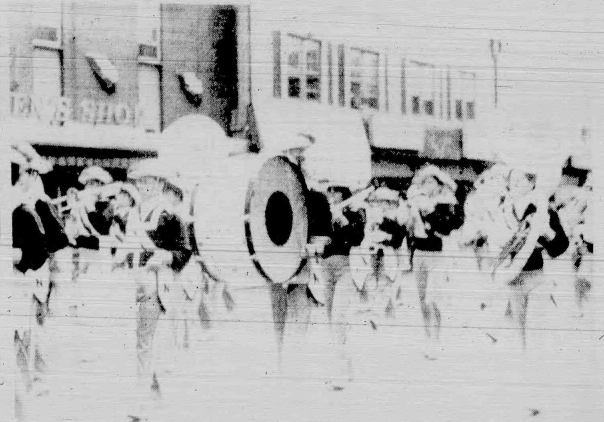
Christina Albanese was this year's Belleville Bella Signorina. Jodi Nosti served as the 1986 Nutley Bella Signorina.



A junior member of the Nutley Long Riders Motorcycle Club riding shotgun seems to turn for a closer look at the Bella Signorina.



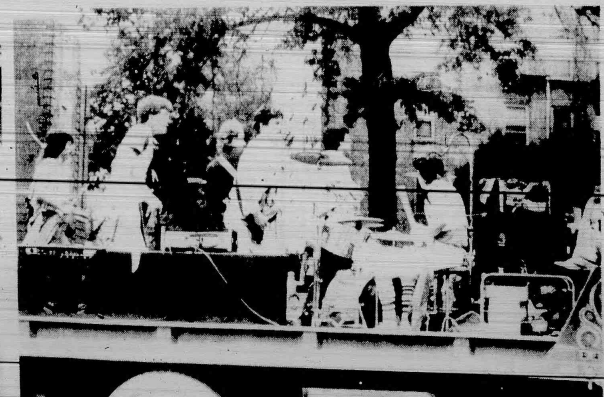
James Piro, a Nutley-based attorney and chairman of the Nutley Republican Club, served as this year's Parade Grand Marshal.



The Nutley High School band was greeted with enthusiastic applause from the hometown crowd.



The Fort Monmouth Army Band regaled the audience with John Phillip Sousa's "Stars and Stripes Forever."



Gabe Naz and the Charge, a Belleville pop band, rounded up the procession with a rocking version of the Monkees' "I'm a Believer."

THE NUTLEY SUN  
BELLEVILLE TIMES  
BLOOMFIELD LIFE

**Classified**

**YOUR ADS ARE SURE TO GET RESULTS!**

**667-3300**  
Mon. thru Fri. 9:00 AM to 5:00 PM  
Deadline — Tues. 12:00 Noon

**CLASSIFIED INDEX**

**CHECK YOUR AD THE FIRST DAY OF PUBLICATION.**  
The Nutley Sun, The Belleville Times and The Bloomfield Life are responsible only for MAJOR errors in the first day of insertion.  
**CREDITS**  
Credits and adjustments are to be made only for errors which significantly affect the effectiveness of the ad, such as a wrong telephone or price. Credits will not be issued for typographical errors or misread words. The newspaper assumes responsibility only for MAJOR errors in the first day of publication.

All Classified Ads Appear in All Three Papers.

The Nutley Sun, The Belleville Times, and The Bloomfield Life

Will Appear On: **abc TV36** Check us out

Using "The Community Bulletin" Time Frame

01 WHEELS

05 Auto Sales  
06 Auto Insurance  
07 Antique Car Sales  
08 Autos Wanted  
11 Campers/Trailers  
12 Financing  
17 Mobile Homes/Offices  
19 Motorcycles/Bikes/Scooters  
21 Parts, Accessories, Services  
23 Rentals  
24 Auto Wreckers

025 ANNOUNCEMENTS

2585 Bids & Auctions  
2586 Births  
2587 Entertainment  
2588 General Notices  
2589 Lost & Found  
2590 Personal Notices  
2591 Professional Notices  
2592 Public Notices

027 CHILD CARE

2785 Baby Sitter  
2786 Nursery Schools  
2787 The School

028 DIAL-A-SERVICE

2842 Accounting/Taxes  
2943 Air Conditioning  
2944 Alarms  
2945 Ambulance Service  
2946 Appliance Repair  
2947 Auto Repair  
2948 Battering Houses  
2949 Bookkeeping  
2950 Carpentry  
2951 Cleaning  
2952 Carpet Cleaning  
2953 Child Care  
2954 Child Care  
2955 Child Care  
2956 Child Care  
2957 Child Care  
2958 Child Care  
2959 Child Care  
2960 Child Care  
2961 Child Care  
2962 Child Care  
2963 Child Care  
2964 Child Care  
2965 Child Care  
2966 Child Care  
2967 Child Care  
2968 Child Care  
2969 Child Care  
2970 Child Care  
2971 Child Care  
2972 Child Care  
2973 Child Care  
2974 Child Care  
2975 Child Care  
2976 Child Care  
2977 Child Care  
2978 Child Care  
2979 Child Care  
2980 Child Care  
2981 Child Care  
2982 Child Care  
2983 Child Care  
2984 Child Care  
2985 Child Care  
2986 Child Care  
2987 Child Care  
2988 Child Care  
2989 Child Care  
2990 Child Care  
2991 Child Care  
2992 Child Care  
2993 Child Care  
2994 Child Care  
2995 Child Care  
2996 Child Care  
2997 Child Care  
2998 Child Care  
2999 Child Care

037 MERCHANDISE

3745 Antiques  
3746 Appliances  
3747 Appliances  
3748 Appliances to Rent  
3749 Appliances to Rent  
3750 Appliances to Rent  
3751 Appliances to Rent  
3752 Appliances to Rent  
3753 Appliances to Rent  
3754 Appliances to Rent  
3755 Appliances to Rent  
3756 Appliances to Rent  
3757 Appliances to Rent  
3758 Appliances to Rent  
3759 Appliances to Rent  
3760 Appliances to Rent  
3761 Appliances to Rent  
3762 Appliances to Rent  
3763 Appliances to Rent  
3764 Appliances to Rent  
3765 Appliances to Rent  
3766 Appliances to Rent  
3767 Appliances to Rent  
3768 Appliances to Rent  
3769 Appliances to Rent  
3770 Appliances to Rent  
3771 Appliances to Rent  
3772 Appliances to Rent  
3773 Appliances to Rent  
3774 Appliances to Rent  
3775 Appliances to Rent  
3776 Appliances to Rent  
3777 Appliances to Rent  
3778 Appliances to Rent  
3779 Appliances to Rent  
3780 Appliances to Rent  
3781 Appliances to Rent  
3782 Appliances to Rent  
3783 Appliances to Rent  
3784 Appliances to Rent  
3785 Appliances to Rent  
3786 Appliances to Rent  
3787 Appliances to Rent  
3788 Appliances to Rent  
3789 Appliances to Rent  
3790 Appliances to Rent  
3791 Appliances to Rent  
3792 Appliances to Rent  
3793 Appliances to Rent  
3794 Appliances to Rent  
3795 Appliances to Rent  
3796 Appliances to Rent  
3797 Appliances to Rent  
3798 Appliances to Rent  
3799 Appliances to Rent  
3800 Appliances to Rent

039 PETS & LIVESTOCK

3945 Free Pets  
3946 Free Pets  
3947 Free Pets  
3948 Free Pets  
3949 Free Pets  
3950 Free Pets  
3951 Free Pets  
3952 Free Pets  
3953 Free Pets  
3954 Free Pets  
3955 Free Pets  
3956 Free Pets  
3957 Free Pets  
3958 Free Pets  
3959 Free Pets  
3960 Free Pets  
3961 Free Pets  
3962 Free Pets  
3963 Free Pets  
3964 Free Pets  
3965 Free Pets  
3966 Free Pets  
3967 Free Pets  
3968 Free Pets  
3969 Free Pets  
3970 Free Pets  
3971 Free Pets  
3972 Free Pets  
3973 Free Pets  
3974 Free Pets  
3975 Free Pets  
3976 Free Pets  
3977 Free Pets  
3978 Free Pets  
3979 Free Pets  
3980 Free Pets  
3981 Free Pets  
3982 Free Pets  
3983 Free Pets  
3984 Free Pets  
3985 Free Pets  
3986 Free Pets  
3987 Free Pets  
3988 Free Pets  
3989 Free Pets  
3990 Free Pets  
3991 Free Pets  
3992 Free Pets  
3993 Free Pets  
3994 Free Pets  
3995 Free Pets  
3996 Free Pets  
3997 Free Pets  
3998 Free Pets  
3999 Free Pets

041 REAL ESTATE

4125 Condominiums for Sale  
4126 Condominiums for Sale  
4127 Condominiums for Sale  
4128 Condominiums for Sale  
4129 Condominiums for Sale  
4130 Condominiums for Sale  
4131 Condominiums for Sale  
4132 Condominiums for Sale  
4133 Condominiums for Sale  
4134 Condominiums for Sale  
4135 Condominiums for Sale  
4136 Condominiums for Sale  
4137 Condominiums for Sale  
4138 Condominiums for Sale  
4139 Condominiums for Sale  
4140 Condominiums for Sale  
4141 Condominiums for Sale  
4142 Condominiums for Sale  
4143 Condominiums for Sale  
4144 Condominiums for Sale  
4145 Condominiums for Sale  
4146 Condominiums for Sale  
4147 Condominiums for Sale  
4148 Condominiums for Sale  
4149 Condominiums for Sale  
4150 Condominiums for Sale  
4151 Condominiums for Sale  
4152 Condominiums for Sale  
4153 Condominiums for Sale  
4154 Condominiums for Sale  
4155 Condominiums for Sale  
4156 Condominiums for Sale  
4157 Condominiums for Sale  
4158 Condominiums for Sale  
4159 Condominiums for Sale  
4160 Condominiums for Sale  
4161 Condominiums for Sale  
4162 Condominiums for Sale  
4163 Condominiums for Sale  
4164 Condominiums for Sale  
4165 Condominiums for Sale  
4166 Condominiums for Sale  
4167 Condominiums for Sale  
4168 Condominiums for Sale  
4169 Condominiums for Sale  
4170 Condominiums for Sale  
4171 Condominiums for Sale  
4172 Condominiums for Sale  
4173 Condominiums for Sale  
4174 Condominiums for Sale  
4175 Condominiums for Sale  
4176 Condominiums for Sale  
4177 Condominiums for Sale  
4178 Condominiums for Sale  
4179 Condominiums for Sale  
4180 Condominiums for Sale  
4181 Condominiums for Sale  
4182 Condominiums for Sale  
4183 Condominiums for Sale  
4184 Condominiums for Sale  
4185 Condominiums for Sale  
4186 Condominiums for Sale  
4187 Condominiums for Sale  
4188 Condominiums for Sale  
4189 Condominiums for Sale  
4190 Condominiums for Sale  
4191 Condominiums for Sale  
4192 Condominiums for Sale  
4193 Condominiums for Sale  
4194 Condominiums for Sale  
4195 Condominiums for Sale  
4196 Condominiums for Sale  
4197 Condominiums for Sale  
4198 Condominiums for Sale  
4199 Condominiums for Sale  
4200 Condominiums for Sale

043 RENTALS

4245 Apartments Furnished  
4246 Apartments Unfurnished  
4247 Apartments Unfurnished  
4248 Apartments Unfurnished  
4249 Apartments Unfurnished  
4250 Apartments Unfurnished  
4251 Apartments Unfurnished  
4252 Apartments Unfurnished  
4253 Apartments Unfurnished  
4254 Apartments Unfurnished  
4255 Apartments Unfurnished  
4256 Apartments Unfurnished  
4257 Apartments Unfurnished  
4258 Apartments Unfurnished  
4259 Apartments Unfurnished  
4260 Apartments Unfurnished  
4261 Apartments Unfurnished  
4262 Apartments Unfurnished  
4263 Apartments Unfurnished  
4264 Apartments Unfurnished  
4265 Apartments Unfurnished  
4266 Apartments Unfurnished  
4267 Apartments Unfurnished  
4268 Apartments Unfurnished  
4269 Apartments Unfurnished  
4270 Apartments Unfurnished  
4271 Apartments Unfurnished  
4272 Apartments Unfurnished  
4273 Apartments Unfurnished  
4274 Apartments Unfurnished  
4275 Apartments Unfurnished  
4276 Apartments Unfurnished  
4277 Apartments Unfurnished  
4278 Apartments Unfurnished  
4279 Apartments Unfurnished  
4280 Apartments Unfurnished  
4281 Apartments Unfurnished  
4282 Apartments Unfurnished  
4283 Apartments Unfurnished  
4284 Apartments Unfurnished  
4285 Apartments Unfurnished  
4286 Apartments Unfurnished  
4287 Apartments Unfurnished  
4288 Apartments Unfurnished  
4289 Apartments Unfurnished  
4290 Apartments Unfurnished  
4291 Apartments Unfurnished  
4292 Apartments Unfurnished  
4293 Apartments Unfurnished  
4294 Apartments Unfurnished  
4295 Apartments Unfurnished  
4296 Apartments Unfurnished  
4297 Apartments Unfurnished  
4298 Apartments Unfurnished  
4299 Apartments Unfurnished  
4300 Apartments Unfurnished

06 AUTO INSURANCE

AUTO INSURANCE

743-5582 Thomas Delancy

**Delson Associates**

AUTO INSURANCE CENTER

CHECK OUR RATES

Immediate Coverage Minimum Down Payment

Mon-Friday 10 a.m. - 5 p.m. - 7 p.m. - 8 p.m.

Saturday 10 a.m. - 3 p.m.

138 BLOOMFIELD AVE. BLOOMFIELD

730-47

**05 AUTO SALES**

**BELLEVILLE YELLOW CAB**

OUT-OF-TOWN TAXI SERVICE ANYWHERE

DEPENDABLE SERVICE 759-2000

1975 Buick Regal

cream paint, P.P. excel

running good, clean in & out

Call 667-3312 after 4:00

32 Datsun 280 ZX Turbo

Auto T-Top, 120 Litz suede

int. New tires & brakes

41,000 mi. excel. cond.

\$8700. Call after 5 p.m. 751-3699

1982 Buick Skylark

2 dr. P.P. P.B. A.C.

cruise AM FM call

61,000 mi. Excellent

Call 748-1153

1975 CHRYSLER NEW

PORT 4 DOOR \$200

Call 667-2526

1970 Cadillac Convertible

Good cond. needs some

work \$3,000 or B.O. Call

338-7539

1983 Monte Carlo. Must

sell! 2 tone metallic

brown, loaded. Asking

\$4000 or best offer. 751-

0491 or 464-6706

1979 Cadillac Seville

silver-blue fully loaded

Excel. cond. \$11,000 mis-

64,495. Call 667-8618 aft

5PM.

Accord LX Hatchback

5 spd. P.B. P.S. cassette

stereo. A.C. grey mint

cond. orig. owner \$5,500

or B.O. 746-4857

1974 IMPALA CHEVY

4 door excellent condi-

tion, air conditioning, V-8

engine, power brakes

steering etc. Original

owner. Mileage 35,000

Call 667-4903

11 CAMPERS/

TRAILERS

SAVETRY Factory Direct

66 closets, compact

lightweight, super in-

cluded travel trailer

30th wheels and mini

motorhomes. Call

375-1500/375-1501

344-4962 for free

brochure

21 PARTS, SERVICES

ACCESSORIES

MODERN AUTO

PARTS

Open 7 Days

8:30-5:30 Weekdays

9:00-10:00 Saturdays

• PARTS • PAINTS •

• MACHINE SHOP •

Mechanics on Duty 6 Days

DISCOUNT PRICES

82 Rutgers Street

Belleville

758-5555

24 AUTO WRECKERS

FRANKIE'S TOWING

24 Hour Service

Johns. Wanted.

Garage Trucks, etc.

Highest Prices Paid

Call 667-2192 or

24 AUTO WRECKERS

MEADOWLANDS AUTO WRECKERS

Buyers of All Junk Cars

Trucks & Vans

Sellers of Used Auto Parts

Anything & Everything

Call Richie Gallo

Open Mon-Sat. 8 a.m. - 5 p.m.

991-0180

Belleville Turnpike

P.O. Box 883

North Arlington

New Jersey 07022

We Deliver

JUNK CARS WANTED

Free Tow Away

Same Day Pick-Up

S.O.S. TOWING, INC.

429-4471

Belleville

481-2610 Newark

2505 LOST & FOUND

LOST - LARGE ALL

WHITE DEW DAWD

CAT - ANSWERS TO

THE NAME CRISTAL

Fluency Ave. Belleville

area Howard Call 751-

1906

LOST PASSBOOK 181

Fidelity Bank, Frank

office 5 A01-2450

0000166-7. Please

return book to bank

LOST PASSBOOK NO

425 First

Fidelity 302 Mt. Pleasant

av. Livingston

Payment stopped

Return book to bank

2595 PERSONAL

NOTICES

I NEED 4 PEOPLE TO

WORK FOR ME

IN THE

WEDDING

PHOTOS - HERRERA

PRODUCTS AS SEEN

ON TV. NO DRUGS. NO

EXERCISE

GUARANTEED. CALL

1-302-764-5080

Looking to rent a parking

space for 24/7 Truck

Call 759-9598

1974 IMPALA CHEVY

4 door excellent condi-

tion, air conditioning, V-8

engine, power brakes

steering etc. Original

owner. Mileage 35,000

Call 667-4903

2785 BABY SITTER

Mature person to babysit

Monday, Wednesday &

Friday in my home. 1000

housekeeping. Call Terry

494-4855

2795 NURSERY

SCHOOLS

Nanny D's

Infant Care Center

204 W. Washington Ave.

Belleville

Full Day Sessions

6 weeks to 2 years old

758-1554

Director, Dolores Aft

2795 NURSERY

SCHOOLS

St. Mary's School

3 year old program

4 year old program

2795 NURSERY

SCHOOLS

LOOKING GLASS

CHILDREN'S CENTER

18 Bellevue Avenue

Bloomfield

Located next to

Brookdale Park

Age 3 months to 5 years

Full Day Care &

Kindergarten

REGISTER NOW



**DIAL-A-SERVICE**

31R5 HOTELS  
RESTAURANTS  
CLUBS

WAITER WAITRES  
For private country c  
Full & part time. all sh  
available. Experienced  
necessary, good work  
conditions & benefi  
Please apply in perso  
Forest Hill Field Cl  
9 Belleville Avenu  
Bloomfield

---

**3155 SALES**

---

**REAL ESTATE**  
**SALESPEOPLE**  
Call us today & let's  
about how we can b  
benefit from a chang  
your present car

**REILLY  
REALTORS**

REAL ESTATE  
SALESPERSONS  
AND BROKERS

License classes in  
Boston, 1962

SCHOOL OF  
REAL ESTATE  
571 Bloomfield Ave  
Verona  
For information call  
239-1216 or 239-1217

**REBOUND AEROBIC**  
239-3079

---

Lingerie Sales  
**UNDER COVER-WE**  
Become a part of the  
novator of home ling  
partys. Have fun &  
earning money. G  
furs and trips. Book  
easy no collecting  
delivery.

**3385 BUSINESS OPPORTUNITIES**

OWN YOUR OWN  
JEAN SPORTSWEAR  
LADIES APPAREL  
CHILDRENS MATER-  
NITY LARGE SI-  
PETITE DANCEW

DAHE, CHIC.  
LEVI, IZOD, GIT  
GUESS, CAL  
KLEIN, SE  
VALENTE, E  
PICONE,  
CLAIBORNE,  
MEMBERS O  
GASOLINE,  
HEALTHTEX,  
1000 OTHERS. \$14  
\$25,900. INVENT  
TRAINING FIXT

Paint Store Business  
sale with building.  
bldg apt. on se  
floor- 50 x 100 lot- E  
Nutley location on  
thoroughfare. Final  
available- call to  
RLC Realty-broker  
6565

**35T5 TUTORING**

**TUTORING**  
Certified teacher  
work on 1 to 1 basis  
your child. Grades K  
subjects.  
661-4009



37A10  
ARTICLES FOR S  
BEDROOM SET  
A C refrigerator &  
household items C  
1273

OUTLET Suit Sa  
many floor lam  
sale around (10  
need stilts to get  
and at 20%  
FURLONG LA  
SHADE OUTLE  
263 Furlong Pa  
days 1-(215) 794-7

**CERAMICS by**  
Classes Monday  
Wednesday, 7-9:  
Beginners We  
Complete ceram

31 Columbus  
Belleville  
751-2862

---

**WANTED  
USED AND  
CONDITION  
CASH  
482-368**





180 Centre St.  
Nutley, N.J. 07110  
667-3440

# GEORGE E. MACMUNN CO.

## REALTORS

100 Woodport Road  
Sparta, N.J. 07871  
729-8727

**OPEN HOUSE - SUNDAY 1-4PM -** 36 HAMPTON PL. NUTLEY (OFF GRANT AVE.) 4 bedrooms, finished liv. Rm. & Din. Rm. - frpl. fam. rm. on 1st. new tilt-in windows, maint. free exterior. ASKING \$199,900.

**BRIDGEBROOK CONDO'S -** TWO FOUR ROOM UNITS. lovely cond., pool, beautiful open views. JUST LISTED - starting at \$109,900.

**DO YOU KNOW WHAT YOUR HOUSE IS WORTH TODAY ?**

We offer a current market. Value analysis... Just pick up the phone & call

**SPARTA - ONE BLOCK TO LAKE -** 2 BR's lovely Liv. Rm. & Din. Rm. w/ frpl. 1 car garage. Dead-end Street. ASKING \$132,500.

**LAKE MOHAWK -** Across from lake w/ beautiful views. 3 bedrooms, frpl., formal D. Rm. lovely deck & much more. ASKING \$132,900.

549 Washington Ave.  
Belleville, NJ 07010

# Century 21

HOMES R US

751-8800

**Put Number 1 to work for you.**

**"3 FAMILY"**

**BELLEVILLE -** Just Listed - Maintenance Free - 3 Family Features: 5-1/2 & 4 modern room apts. plus finished basement, 3 car driveway. \$1750. current mo. income. Asking \$205,000. Call

Each office is independently owned and operated. Equal Housing Opportunity.

**Find out how much your home is worth... call today for a free market analysis!**

549 Washington Ave.  
Belleville, NJ 07010

# Century 21

WAYNE K. THOMAS  
REALTORS

**1624 BROAD ST. BLOOMFIELD**  
**OPEN HOUSE**  
**SUNDAY 1-4 P.M.**

**MOTHER DAUGHTER**

This immaculate home set on a large lot in Bloomfield features spacious LR, country kitchen, 3 bdms, and 2 full baths. Paneled basement with rec room, summer kitchen and attached garage with ample parking. Many extras. Asking \$203,000.

**277 Broad Street Bloomfield, New Jersey**  
**(201) 429-7400**

Each office independently owned and operated"  
MEMBER OF BLOOMFIELD GLEN RIDGE,  
NUTLEY, BELLEVILLE BOARD OF REALTORS

STATEMENT OF OWNERSHIP, MANAGEMENT AND CIRCULATION

For the year ending December 31, 1985

1. Publication Title: BELLEVILLE TIMES

2. Issue Frequency: Weekly

3. Issue Date for Circulation Data Below: October 16, 1986

4. Issue Number: 40

5. Annual Subscription Price: \$12.00

6. Number of Copies of this Issue: 10,000

7. Total Number of Copies of this Issue: 10,000

8. Total Number of Copies of all Issues: 10,000

9. Total Number of Copies of all Issues: 10,000

10. Total Number of Copies of all Issues: 10,000

11. Total Number of Copies of all Issues: 10,000

12. Total Number of Copies of all Issues: 10,000

13. Total Number of Copies of all Issues: 10,000

14. Total Number of Copies of all Issues: 10,000

15. Total Number of Copies of all Issues: 10,000

16. Total Number of Copies of all Issues: 10,000

17. Total Number of Copies of all Issues: 10,000

18. Total Number of Copies of all Issues: 10,000

19. Total Number of Copies of all Issues: 10,000

20. Total Number of Copies of all Issues: 10,000

21. Total Number of Copies of all Issues: 10,000

22. Total Number of Copies of all Issues: 10,000

23. Total Number of Copies of all Issues: 10,000

24. Total Number of Copies of all Issues: 10,000

25. Total Number of Copies of all Issues: 10,000

26. Total Number of Copies of all Issues: 10,000

27. Total Number of Copies of all Issues: 10,000

28. Total Number of Copies of all Issues: 10,000

29. Total Number of Copies of all Issues: 10,000

30. Total Number of Copies of all Issues: 10,000

31. Total Number of Copies of all Issues: 10,000

32. Total Number of Copies of all Issues: 10,000

33. Total Number of Copies of all Issues: 10,000

34. Total Number of Copies of all Issues: 10,000

35. Total Number of Copies of all Issues: 10,000

36. Total Number of Copies of all Issues: 10,000

37. Total Number of Copies of all Issues: 10,000

38. Total Number of Copies of all Issues: 10,000

39. Total Number of Copies of all Issues: 10,000

40. Total Number of Copies of all Issues: 10,000

41. Total Number of Copies of all Issues: 10,000

42. Total Number of Copies of all Issues: 10,000

43. Total Number of Copies of all Issues: 10,000

44. Total Number of Copies of all Issues: 10,000

45. Total Number of Copies of all Issues: 10,000

46. Total Number of Copies of all Issues: 10,000

47. Total Number of Copies of all Issues: 10,000

48. Total Number of Copies of all Issues: 10,000

49. Total Number of Copies of all Issues: 10,000

50. Total Number of Copies of all Issues: 10,000

51. Total Number of Copies of all Issues: 10,000

52. Total Number of Copies of all Issues: 10,000

53. Total Number of Copies of all Issues: 10,000

54. Total Number of Copies of all Issues: 10,000

55. Total Number of Copies of all Issues: 10,000

56. Total Number of Copies of all Issues: 10,000

57. Total Number of Copies of all Issues: 10,000

58. Total Number of Copies of all Issues: 10,000

59. Total Number of Copies of all Issues: 10,000

60. Total Number of Copies of all Issues: 10,000

61. Total Number of Copies of all Issues: 10,000

62. Total Number of Copies of all Issues: 10,000

63. Total Number of Copies of all Issues: 10,000

64. Total Number of Copies of all Issues: 10,000

65. Total Number of Copies of all Issues: 10,000

66. Total Number of Copies of all Issues: 10,000

67. Total Number of Copies of all Issues: 10,000

68. Total Number of Copies of all Issues: 10,000

69. Total Number of Copies of all Issues: 10,000

70. Total Number of Copies of all Issues: 10,000

71. Total Number of Copies of all Issues: 10,000

72. Total Number of Copies of all Issues: 10,000

73. Total Number of Copies of all Issues: 10,000

74. Total Number of Copies of all Issues: 10,000

75. Total Number of Copies of all Issues: 10,000

76. Total Number of Copies of all Issues: 10,000

77. Total Number of Copies of all Issues: 10,000

78. Total Number of Copies of all Issues: 10,000

79. Total Number of Copies of all Issues: 10,000

80. Total Number of Copies of all Issues: 10,000

81. Total Number of Copies of all Issues: 10,000

82. Total Number of Copies of all Issues: 10,000

83. Total Number of Copies of all Issues: 10,000

84. Total Number of Copies of all Issues: 10,000

85. Total Number of Copies of all Issues: 10,000

86. Total Number of Copies of all Issues: 10,000

87. Total Number of Copies of all Issues: 10,000

88. Total Number of Copies of all Issues: 10,000

89. Total Number of Copies of all Issues: 10,000

90. Total Number of Copies of all Issues: 10,000

91. Total Number of Copies of all Issues: 10,000

92. Total Number of Copies of all Issues: 10,000

93. Total Number of Copies of all Issues: 10,000

94. Total Number of Copies of all Issues: 10,000

95. Total Number of Copies of all Issues: 10,000

96. Total Number of Copies of all Issues: 10,000

97. Total Number of Copies of all Issues: 10,000

98. Total Number of Copies of all Issues: 10,000

99. Total Number of Copies of all Issues: 10,000

100. Total Number of Copies of all Issues: 10,000

## Bellevillite killed in bus crash

A Belleville woman was killed and four Nutley residents seriously injured when the number 32 bus in which they were riding to New York this past Thursday morning collided head-on into a four bus near the Lincoln Tunnel.

Zanna C. Telher, 29, of Belleville was pronounced dead on the scene by police. Many of the 38 other passengers, who were believed to be Nutley residents, were taken to various area hospitals.

Four Nutley residents were seriously injured in the accident, in which a westbound bus carrying Austrian tourists collided into the number 32, traveling in the eastbound express bus lane.

Annette Smith, 27, who was taken to Jersey City Medical Center, suffered a lacerated liver, broken hands, arms and a broken left leg. Initially listed in critical condition, Smith underwent two surgeries Thursday afternoon, one to repair her liver and one by an orthopedist, according to a hospital spokesman.

Smith remained in the recovery room for two days before being transferred. She was listed in stable condition Tuesday.

Also seriously injured in the accident were Smith's husband, Douglass Smith, 32, with head injuries, Peter Porzio, 37, also with head injuries, and Judy Good, 34, with multiple lacerations and contusions. They were all taken to Palisades General Hospital, where Smith was listed in good condition as of Tuesday. Porzio, who underwent surgery Monday for facial injuries, was listed in satisfactory condition Tuesday. Good was released from the hospital Monday.

Neither the Austrian tourists or their driver or the DeCamp bus driver was reported seriously injured.

The accident occurred just before 7:30 a.m. Thursday, when the number 32, a DeCamp Company of Montclair bus, was headed toward to tunnel entrance on Route 495 east. According to reports, the driver of the westbound bus swerved into the eastbound lane, colliding with the number 32. The DeCamp bus was in an express lane, which is separated from opposing traffic only by two-foot-high rubber tubes. The lane is converted to westbound in the evening by moving the tubes, according to a Port Authority spokesman.

The Port Authority has no plans to change the traffic flow on route 495, according to spokesman Bill Cahill.

"I don't think it would be feasible," he said. "There is basically no other way to do it (move the bus traffic)." When the express lanes were instituted in December 1970, there were studies galore done.

"I don't think that there is anything you can do to prevent accidents 100 percent. Show me a roadway in the country that has not had an accident," he added.

The Port Authority also does not plan to station traffic officers at the bus lanes. "They are already monitored by Port Authority police," he said.

Though officials from DeCamp Company of Montclair, which runs the number 32, said they did not know the names of all passengers on board, most are believed to have been Nutley residents because the bus was an express which only stops in the township before traveling to New York. According to DeCamp, the number 32 operates as an express each morning until 8 buses scheduled after 8 a.m. also stop in Lyndhurst and Clifton, the spokesman said. It will continue to run on the same schedule using the same route, according to DeCamp.

According to the driver or the tour bus, he swerved into the eastbound lane to avoid hitting a car which had cut in front of the bus. The Hudson County Prosecutor is reportedly investigating the accident. Attempts to reach the Prosecutor Tuesday were unsuccessful.

(Continued from page 6)

## Bookmarks

### Children's Library offers 'helpful' book list

The Children's Room of the Library is currently offering a book list, entitled 'Help.' It lists books on babies, brother and sister relationships, going to bed, temper tantrums, fear of the dark, fear in general, safety, and going to school.

Among the titles included are "The New Baby at Your House" by Cole; "Why Can't I Be an Only Child Like You, Wigger" by Hazen; "I Hate To Go To Bed" by Barrett; "The Temper Tantrum Book" by Preston; "There's a Nightmare in my Closet" by Mayer; "Never Talk to Strangers" by Joyce; and "The First Day of School" by Reif.

The booklist was prepared by Alice Norris, Children's Librarian, and is available in the James F. Cozzaglio Children's Room.

### Native New Jersey gems shine in library exhibit

Currently on exhibit at the Library are sand-polished gemstones that are native to New Jersey. These are also rare in the country. The much-talked-about Cape May Diamond is shown as it looks when found and after being faceted. Some of the other gemstones are also shown both before and after polishing.

Produced, cut, polished and mounted by Irving Folk, a member of the Newark Mineralogical Society and an Honorary Life Member of the New Jersey Lapidary Society and Life Member of the Society of Automotive Engineers, these gemstones are shown in sizes large enough to see without magnification. The exhibit can be viewed at the Library during regular Library hours.

### "Celebrate Books" features Shafter interview

The October program of "Celebrate Books from the Belleville Public Library" features host David Bryant, library director, interviewing Mrs. Richard Shafter about the dedication of the Branch Library, which will be named in her honor on October 26 at 2 p.m. Also on the program is Dr. Robert Ramer, school dentist from Nutley, who discusses October as dental education month and his liaison with the Library.

Bryant discusses new library video and non-fiction, while Adrea Cohen, assistant library director discusses career preparation books for college and financial aid sources. Bryant discusses upcoming Friends of the Library programs and the library's new telephone numbers.

The program is directed by Marilyn Mango, media specialist at Belleville High School, and produced by Adrea Cohen.

## Third Annual Cavalcade of Bands

The Belleville High School Marching Band will be hosting its Third Annual Cavalcade of Bands competition on Friday, October 17 at 7 p.m. in the municipal stadium.

Some of the competing bands will be Westfield High School, South Brunswick High School, Rutherford High School, West Deptford High School, Wayne Hills and Wayne Valley Regional High Schools, and Linden High School. An exhibition performance will be given by our own Belleville H.S. Marching Band, under the direction of J. Kraemer.

Everyone is invited to come out and be entertained by some of the best marching bands and precision drill teams in the state. Refreshments will be supplied through the efforts of the Belleville Music Parents Association.



Nobody Does It Better Than The LOW PRICE LEADER

# HALF PRICE SALE

**LOOK FOR OUR NEW COLOR CIRCULAR**

If you have not received one in the mail or in your local newspaper, pick one up at your nearby ShopRite while supplies last.

**Kids In The Kitchen COOKING CONTEST**

Enter Your Favorite Recipe Using A ShopRite Brand Product And You May Win One Of:

- 3 Trips to DisneyWorld/Epcot
- 3 \$1,000 Savings Bonds
- 3 \$500 Savings Bonds

ENTRY FORMS & DETAILS AT ShopRite

REG. 65 ShopRite English Muffins 12-oz. pk. **32**

REG. 99 6 PK. 12-oz. HARD ROLLS, ITALIAN OR ASST. RYE Harvest Pride Breads 16-oz. loaf **49**

REG. 2.49 ORIG. LIME MUSH OR FRESH SCENT Old Spice Deodorant 2.5-oz. stick **1.24**

REG. 1.69 REG. BLUE OR GREEN ShopRite Mouthwash 24-oz. btl. **84**

REG. 1.99 ShopRite SOF-STRETCH Control Top Pantyhose WHERE AVAILABLE **99**

40, 60, 75 OR 100 WATT G.E. Standard Light Bulbs 100-watt **1.44**

ALL NATURAL NO PRESERVATIVES Fresh Mushrooms 12-oz. pkg. **79**

REG. 1.39 Ajax Laundry Detergent CASE OF 12 9.66 **69**

REG. 1.39 ASST. OR WHITE Northern Paper Napkins CASE OF 12 8.28 **69**

REG. 1.39 Reg. or Diet Vintage Cola CS. OF 4 6-PACKS 2.76 **69**

REG. OR DIET SEAGRAMS Ginger Ale or Dr. Pepper CASE OF 6 4.44 **74**

REG. 3.79 Fab Liquid Laundry Detergent CASE OF 6 11.34 **1.89**

REG. 1.09 ALL VAR. Aunt Millie's Spaghetti Sauce CASE OF 12 6.48 **54**

REG. .99 Bes-Pak Trash Bags 10-ct. box **49**

REG. 1.75 Sunshine Hi Ho Crackers 12-oz. box **87**

REG. 1.39 Ajax Liquid Dish Detergent 1-pt. 6-oz. btl. **69**

REG. 47.99 ALL VAR. Sanwa Ramen Noodles 9-oz. pkgs. **81.00**

REG. 3.69 LIQUID FOR DISHWASHERS Palmolive Automatic 4-lb. 1-oz. btl. **1.84**

REG. .89 Prince Rotini Primavera 12-oz. pk. **44**

REG. 79 RODS LOGS STICKS OR THIN THINS BAVARIAN Anderson Pretzels 8-oz. pk. **39**

REG. 1.29 Tio Sancho Nacho Chips 7-oz. box **64**

REG. 1.59 FAMILY FUDGE Betty Crocker Brownie Mix 11.5-oz. 3-lb. oz. box **79**

REG. .65 ASST. VAR. Banquet Pot Pies 8-oz. pk. **32**

REG. 1.29 PANCAKES OR Downyflake French Toast 8-oz. pk. **64**

REG. 1.09 ASST. VAR. Downyflake Waffles 12-oz. pk. **54**

REG. 1.39 ShopRite REG. OR CRINKLE CUT French Fried Potatoes 2-lb. bag **69**

REG. 1.59 HENDRIES Life Savers Flavor Pops 12-ct. box **79**

REG. 2.19 ShopRite ICE CREAM CUPS OR Ice Cream Sandwiches 12-pk. pk. **1.09**

REG. 1.69 Wilson Beef Franks 1-lb. pk. **84**

REG. 2.29 LOW SODIUM Mrs. Filberts Family Spread 3-lb. tub **1.14**

WEAVER STORE SLICED Chicken Bologna 1-lb. **84**

REG. 1.99 MEAT OR BEEF THIN SLICED Oscar Mayer Bologna 10-oz. pk. **99**

REG. 1.09 King Sour Sour Dressing 1-pt. cont. **49**

U.S.D.A. CHOICE STORE SLICED KING'S PRIDE Cooked Roast Beef 1-lb. **2.99**

HEAVY WITH JUICE, CALIFORNIA Valencia Oranges 1-lb. bag. **99**

100% PURE FAMILY SIZE Minute Maid Orange Juice 96-oz. cin. **1.29**

ALL VAR. JONES FROZEN BREAKFAST Brown & Serve Sausages 8-oz. pk. **84**

## The Grocery Place

REG. OR FRENCH GREEN BEANS (1-LB.) WHOLE OR CREAM CORN OR MEDIUM SWEET PEAS Del Monte Vegetables 1-lb., 1-oz. oz. cans **1.00**

CLEAR OR NATURAL ShopRite Apple Juice 1/2-gal. btl. **89**

SOLID PACK, IN OIL OR WATER Bumble Bee White Tuna 6-oz. can **99**

#8 OR #9 SPAGHETTI #35 ELBOWS OR #32 ZITI Prince Pastas 1-lb. pkgs. **1.00**

REG. OR CAFFEINE FREE Diet Coke, Coke or Tab 2-lb. btl. **99**

ALL VARIETIES Seven Seas Salad Dressing 8-oz. btl. **59**

CHICKEN OR SHRIMP BI-PACK La Choy Dinners 2-lb., 10-oz. can **1.99**

CHICKEN OR BEEF College Inn Broth 13-oz. oz. cans **3.10**

#8 OR #9 SPAGHETTI #35 ELBOWS OR #32 ZITI Prince Pastas 1-lb. pkgs. **1.00**

U.S. #1 Idaho Potatoes 5-lb. bag **1.19**

ShopRite Cottage Cheese 1-lb. cont. **99**

REG. QUARTERS ShopRite Margarine 3-lb. pkgs. **1.00**

## The Produce Place

U.S. #1 Idaho Potatoes 5-lb. bag **1.19**

88 SIZE CALIFORNIA Valencia Oranges 5-lb. **99**

120 SIZE CALIFORNIA Bartlett Pears 1-lb. **59**

EXTRA FANCY WASHINGTON STATE GOLDEN OR Red Delicious Apples 1-lb. **79**

ROYAL PURPLE Fresh Eggplant 1-lb. **59**

FRESH LONG Green Cucumbers 4-lb. **99**

HIGH IN VITAMIN A Fresh Carrots 2-lb. bag **59**

## The Dairy Place

ShopRite Cottage Cheese 1-lb. cont. **99**

REG. QUARTERS ShopRite Margarine 3-lb. pkgs. **1.00**

STORE SLICED BAVARIAN Imported Swiss Cheese 1-lb. **3.59**

MORRELL Stick Pepperoni 1-lb. **2.99**

Health & Beauty Aids

ALL VARIETIES Crest Toothpaste 6.4-oz. tube **1.49**

## ShopRite Coupon

WITH THIS COUPON **50 OFF** TOWARD THE PURCHASE OF ANY SIZE PKG. OF LEAN, EXTRA LEAN OR SUPER LEAN Ground Beef

Coupon good at any ShopRite market. Limit one per family. Effective Sun. Oct. 12 thru Sat. Oct. 18, 1986.

SAVE 50

## The Appy Place

There's real quality behind Cumberland's great look. You can cook in it. Serve in it. Store in it. Refrigerator or freezer. Extra heavy gauge porcelain on steel gives even heat distribution. Recessed covers seal in moisture and flavor. Handles and knobs are overcoated below 375°. Delicate subtle colors are permanently baked in. Can't wash or wear off. Chip and stain resistant. Wipes clean with a damp cloth... and safe in your dishwasher.

COVER AVAILABLE ONLY 2.99

A DIFFERENT PIECE FEATURED EACH WEEK

## The MEATING Place TRIM 'n LEAN™

U.S.D.A. CHOICE BEEF LOIN, TOP BUTT Boneless Sirloin Steak 1-lb. **2.19**

U.S.D.A. CHOICE BEEF LOIN, TAILLESS Porterhouse or T-Bone Steak 1-lb. **3.19**

ANY SIZE PKG., NOT LESS THAN 80% Lean Ground Beef 1-lb. **1.39**

HEAT & EAT FULLY COOKED BREAST OR CHICKEN CHUNKS OR Tyson Chicken Breast Cutlets 12-oz. pk. **2.19**

ANY SIZE PKG., NOT LESS THAN 60% Lean Ground Beef Patties 1-lb. **1.59**

CURE #81 Boneless Ham 10-lb. **3.99**

ANY SIZE PKG., NOT LESS THAN 60% Lean Ground Beef Patties 1-lb. **1.59**

QUAKER MAID FROZEN Sandwich Steaks 12-oz. pk. **2.99**

PORK CHOP COMBO MEATY BITE PORTION Pork Loin For BBQ 1-lb. **1.79**

KINGS PRIDE OVEN ROASTED Corned Beef Brisket 2-lb. **2.19**

Pork Spare Ribs 1-lb. **1.99**

LOUIS RICH FRESH Turkey Drumsticks 1-lb. **69**

## The Deli Place

REG., THICK OR MAPLE ShopRite Sliced Bacon 1-lb. pk. **1.49**

## Fresh Fish Market

U.S. GRADE A' NEW ENGLAND Fresh Fillet of Scrod Cod 1-lb. **2.29**

WHY PAY MORE? Armour Canned Ham 3-lb. can **5.99**

U.S. GRADE A FRESH NEW ENGLAND POLLOCK Fillet of Boston Blue 1-lb. **1.99**

ShopRite Raisin Bread 16-oz. loaf **1.19**

FROZEN & THAWED, 31.35 PER LB. Large Shrimp 1-lb. **6.99**

ASSORTED VARIETIES ShopRite Pita 12-oz. pk. **69**

ShopRite Coupon WITH THIS COUPON **50 OFF** Durkee Pepper 1-lb. **1.19**

NEW EASY POUR PLASTIC CONT ShopRite Motor Oil 10W/30 1-qt. cont. **69**

Effective Sun. Oct. 12 thru Sat. Oct. 18, 1986

CUMBERLAND BY HEARTHSIDE PORCELAIN-ON-STEEL Cookware 1-qt. OPEN SAUCEPAN **2.99**

SAVE 30 VALUABLE COUPON WITH THIS COUPON **50 OFF** Cumberland Cookware

WEEK #1 1-QT. OPEN SAUCEPAN only

COUPON good at any ShopRite market. Effective Sun. Oct. 12 thru Sat. Oct. 18, 1986.